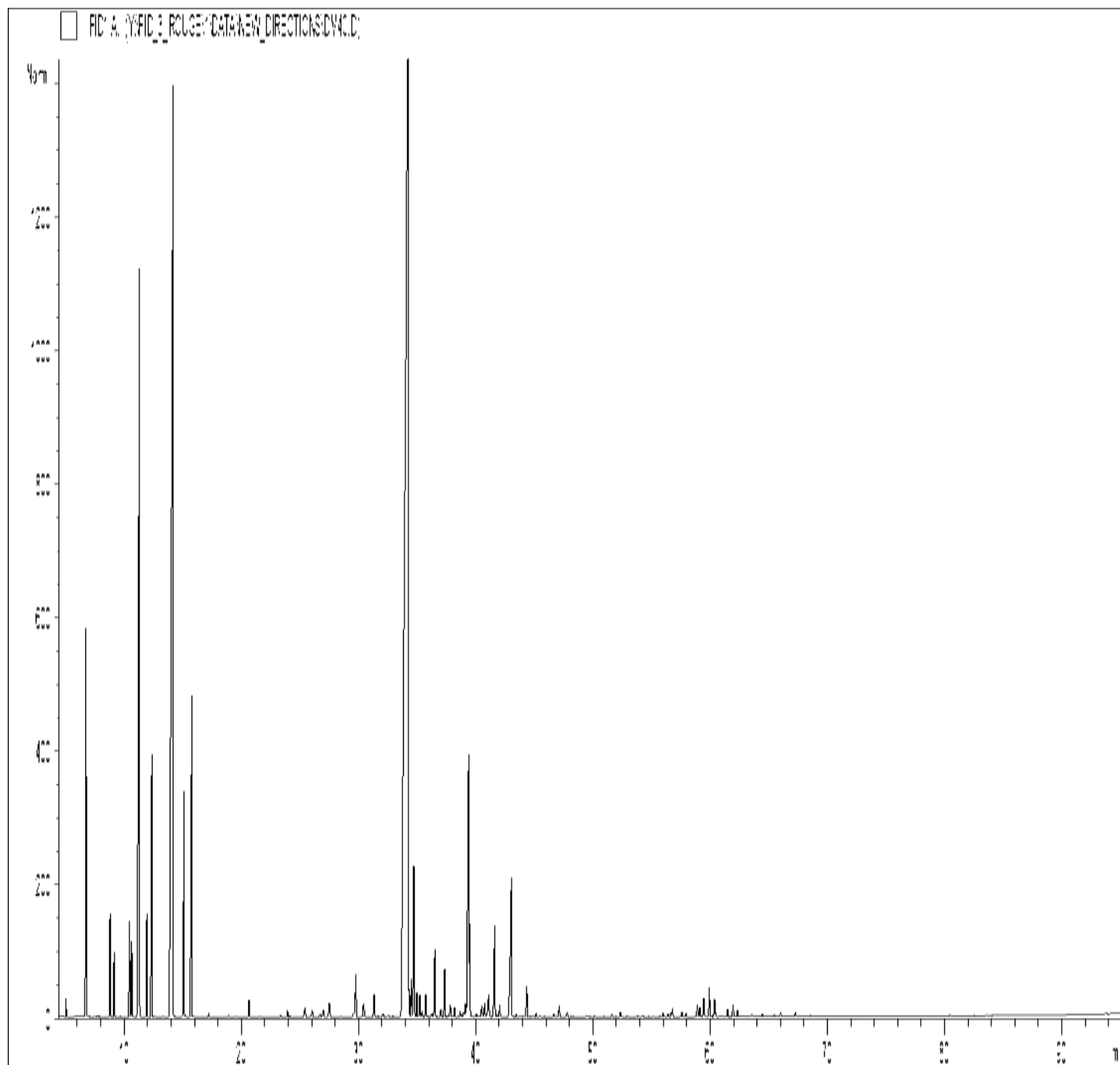


## GCMS ANALYSIS

PRODUCT NAME: TEA TREE ORGANIC ESSENTIAL OIL (CHINA) - 50062

DATE: December 22, 2020



*Due to volume turnover, this report is not lot specific, It is representative of the quality of this oil produced by the manufacturer of this product, Specific lots may vary slightly as is the case in natural products,*

## GCMS ANALYSIS (cont'd.)

PRODUCT NAME: TEA TREE ORGANIC ESSENTIAL OIL (CHINA) - 50062

Peak	RT (min)	Compound	%
1	5,04	BUTANAL, 2-METHYL-	0,07
2	6,71	<b>alpha-PINENE</b>	<b>2,25</b>
3	6,74	alpha-THUYENE	0,93
4	7,48	alpha-FENCHENE	0,01
5	7,68	CAMPHENE	0,01
6	8,79	beta-PINENE	0,70
7	9,14	<b>SABINENE</b>	<b>0,43</b>
8	10,45	beta-MYRCENE	0,86
9	10,64	alpha-PHELLANDRENE	0,66
10	10,78	psi-LIMONENE	0,01
11	11,20	o-CYMENE	0,02
12	11,30	<b>alpha-TERPINENE</b>	<b>9,50</b>
13	11,93	<b>LIMONENE</b>	<b>0,77</b>
14	12,36	<b>1,8-CINEOLE</b>	<b>2,75</b>
15		beta-PHELLANDRENE	
16	14,18	<b>gamma-TERPINENE</b>	<b>19,67</b>
17	15,09	<b>p-CYMENE</b>	<b>1,74</b>
18	15,76	<b>TERPINOLENE</b>	<b>3,41</b>
19	17,21	3-HEXEN-1-OL ACETATE	0,02
20	18,89	1-HEXANOL	0,01
21	20,65	3-HEXEN-1-OL	0,13
22	21,52	ALIPHATIC ESTER	0,01
23	23,32	AROMATIC COMPOUND	0,02
24	23,93	alpha,p-DIMETHYLSTYRENE	0,05
25	24,11	MENTHATRIENE ISOMER	0,01
26	25,43	trans-THUYANOL	0,12
27	26,04	SESQUITERPENE	0,09
28	26,72	BICYCLOELEMENE	0,04
29	27,00	SESQUITERPENE	0,08
30	27,49	alpha-COPAENE	0,17

### Disclaimer & Caution:

Please refer to all relevant technical information specific to the product, prior to use. The information contained in this document is obtained from current and reliable sources. New Directions Aromatics Inc. provides the information contained herein, but makes no representation as to its comprehensiveness or accuracy. Individuals receiving this information must exercise their independent judgment in determining its appropriateness for a particular purpose. The user of the product is solely responsible for compliance with all laws and regulations applying to the use of the products, including intellectual property rights of third parties. As the ordinary or otherwise use(s) of this product is outside the control of New Directions Aromatics Inc., no representation or warranty, expressed or implied, is made as to the effect(s) of such use(s), (including damage or injury), or the results obtained. The liability of New Directions Aromatics Inc. is limited to the value of the goods and does not include any consequential loss. New Directions Aromatics Inc. shall not be liable for any errors or delays in the content, or for any actions taken in reliance thereon. New Directions Aromatics Inc. shall not be responsible for any damages resulting from use of or reliance upon this information. In the event of any dispute, the Customer hereby agrees that Jurisdiction is limited to the province of Ontario.

## GCMS ANALYSIS (cont'd.)

PRODUCT NAME: TEA TREE ORGANIC ESSENTIAL OIL (CHINA) - 50062

Peak	RT (min)	Compound	%
31	27,56	SESQUITERPENE	0,02
32	28,48	DILL ETHER	0,01
33	28,77	COMPOUND Mw=152	0,01
34	29,55	SESQUITERPENE	0,04
35	29,75	alpha-GURJUNENE	0,49
36	30,25	beta-MAALIENE	0,01
37	30,41	cis-THUYANOL	0,14
38	30,46	LINALOOL	0,04
39	31,31	trans-p-MENTH-2-EN-1-OL	0,27
40	31,66	SESQUITERPENE	0,01
41	32,06	TERPINENE-1-OL	0,04
42	32,53	FENCHOL	0,03
43	32,93	beta-ELEMENE	0,01
44	34,24	<b>TERPINENE-4-OL</b>	<b>39,47</b>
45	34,29	beta-CARYOPHYLLENE	0,24
46	34,51	SESQUITERPENE	0,39
47	34,71	<b>AROMADENDRENE</b>	<b>1,28</b>
48	34,75	SESQUITERPENE	0,06
49	34,96	COPACAMPHENE	0,19
50	35,22	cis-p-MENTH-2-EN-1-OL	0,20
51	35,41	SESQUITERPENE	0,05
52	35,73	CADINADIENE ISOMER	0,20
53	36,22	GERMACRENE A	0,03
54	36,51	ALLO-AROMADENDRENE	0,69
55	37,02	gamma-GURJUNENE	0,07
56	37,34	ZONARENE	0,47
57	37,80	alpha-HUMULENE	0,12
58	37,82	delta-TERPINEOL	0,02
59	38,16	gamma-SELINENE	0,02
60	38,18	cis-PIPERITOL	0,07

### Disclaimer & Caution:

Please refer to all relevant technical information specific to the product, prior to use. The information contained in this document is obtained from current and reliable sources. New Directions Aromatics Inc. provides the information contained herein, but makes no representation as to its comprehensiveness or accuracy. Individuals receiving this information must exercise their independent judgment in determining its appropriateness for a particular purpose. The user of the product is solely responsible for compliance with all laws and regulations applying to the use of the products, including intellectual property rights of third parties. As the ordinary or otherwise use(s) of this product is outside the control of New Directions Aromatics Inc., no representation or warranty, expressed or implied, is made as to the effect(s) of such use(s), (including damage or injury), or the results obtained. The liability of New Directions Aromatics Inc. is limited to the value of the goods and does not include any consequential loss. New Directions Aromatics Inc. shall not be liable for any errors or delays in the content, or for any actions taken in reliance thereon. New Directions Aromatics Inc. shall not be responsible for any damages resulting from use of or reliance upon this information. In the event of any dispute, the Customer hereby agrees that Jurisdiction is limited to the province of Ontario.

## GCMS ANALYSIS (cont'd.)

PRODUCT NAME: TEA TREE ORGANIC ESSENTIAL OIL (CHINA) - 50062

Peak	RT (min)	Compound	%
61	38,65	NERAL	0,05
62	38,97	gamma-MUUROLENE	0,05
63	39,11	CALARENE	0,13
64	39,37	<b>alpha-TERPINEOL</b>	<b>3,32</b>
65	39,50	<b>LEDENE</b>	<b>0,92</b>
66	39,93	GURJUNENE ISOMER	0,01
67	40,04	GERMACRENE D	0,03
68	40,50	MUUROLADIENE ISOMER	0,13
69	40,75	beta-SELINENE	0,13
70	40,96	PIPERITONE	0,02
71	41,06	alpha-SELINENE	0,14
72	41,10	alpha-MUUROLENE	0,19
73	41,60	BICYCLOGERMACRENE	1,03
74	41,82	SESQUITERPENE	0,02
75	42,03	trans-PIPERITOL	0,11
76	42,95	gamma-CADINENE	0,69
77	43,03	<b>delta-CADINENE</b>	<b>1,46</b>
78	43,46	SESQUITERPENE Mw=202	0,02
79	43,77	SESQUITERPENE Mw=202	0,02
80	44,35	CADINA-1,4-DIENE	0,30
81	45,13	NEROL	0,03
82	45,45	MENTHATRIENIC COMPOUND	0,01
83	46,65	SELINENE ISOMER	0,03
84	47,11	CALAMENENE	0,11
85	47,70	p-CYMENE-8-OL	0,03
86	47,79	GERANIOL	0,02
87	50,13	epi-CUBEBOL	0,01
88	51,62	alpha-CALACORENE	0,03
89	52,63	PALUSTROL	0,05
90	52,92	CUBEBOL	0,01

### Disclaimer & Caution:

Please refer to all relevant technical information specific to the product, prior to use. The information contained in this document is obtained from current and reliable sources. New Directions Aromatics Inc. provides the information contained herein, but makes no representation as to its comprehensiveness or accuracy. Individuals receiving this information must exercise their independent judgment in determining its appropriateness for a particular purpose. The user of the product is solely responsible for compliance with all laws and regulations applying to the use of the products, including intellectual property rights of third parties. As the ordinary or otherwise use(s) of this product is outside the control of New Directions Aromatics Inc., no representation or warranty, expressed or implied, is made as to the effect(s) of such use(s), (including damage or injury), or the results obtained. The liability of New Directions Aromatics Inc. is limited to the value of the goods and does not include any consequential loss. New Directions Aromatics Inc. shall not be liable for any errors or delays in the content, or for any actions taken in reliance thereon. New Directions Aromatics Inc. shall not be responsible for any damages resulting from use of or reliance upon this information. In the event of any dispute, the Customer hereby agrees that Jurisdiction is limited to the province of Ontario.

## GCMS ANALYSIS (cont'd.)

PRODUCT NAME: TEA TREE ORGANIC ESSENTIAL OIL (CHINA) – 50062

Peak	RT (min)	Compound	%
91	55,14	CARYOPHYLLENE EPOXIDE	0,01
92	55,96	MAALIOL	0,04
93	56,38	GLEENOL ISOMER	0,03
94	56,66	METHYLEUGENOL	0,03
95	56,77	epi-GLOBULOL	0,08
96	57,58	LEDOL	0,05
97	57,92	PHOTOSANTALOL ISOMER	0,03
98	58,90	GLEENOL	0,12
99	59,10	epi-CUBENOL	0,10
100	59,44	CUBENOL	0,19
101	59,92	<b>GLOBULOL</b>	<b>0,30</b>
102	60,37	<b>VIRIDIFLOROL</b>	<b>0,17</b>
103	60,43	cis-1,2-DIHYDROXY-p-MENTH-2-ENE	0,03
104	61,47	10-epi-gamma-EUDESMOL	0,08
105	61,95	ROSIFOLIOL	0,12
106	62,33	SPATHULENOL	0,07
107	63,56	trans-1,2-DIHYDROXY-p-MENTH-2-ENE	0,02
108	64,43	SORBIC ACID	0,03
109	65,44	alpha-MUUROLOL	0,02
110	66,00	delta-CADINOL	0,04
111	66,31	SESQUITERPENIC EPOXIDE	0,01
112	66,61	CARVACROL	0,01
113	67,28	alpha-NOOTKATOL	0,04
114	68,54	EUDESMA-7(11)-EN-4-OL	0,01
		<b>TOTAL</b>	<b>99,96</b>

### Disclaimer & Caution:

Please refer to all relevant technical information specific to the product, prior to use. The information contained in this document is obtained from current and reliable sources. New Directions Aromatics Inc. provides the information contained herein, but makes no representation as to its comprehensiveness or accuracy. Individuals receiving this information must exercise their independent judgment in determining its appropriateness for a particular purpose. The user of the product is solely responsible for compliance with all laws and regulations applying to the use of the products, including intellectual property rights of third parties. As the ordinary or otherwise use(s) of this product is outside the control of New Directions Aromatics Inc., no representation or warranty, expressed or implied, is made as to the effect(s) of such use(s), (including damage or injury), or the results obtained. The liability of New Directions Aromatics Inc. is limited to the value of the goods and does not include any consequential loss. New Directions Aromatics Inc. shall not be liable for any errors or delays in the content, or for any actions taken in reliance thereon. New Directions Aromatics Inc. shall not be responsible for any damages resulting from use of or reliance upon this information. In the event of any dispute, the Customer hereby agrees that Jurisdiction is limited to the province of Ontario.