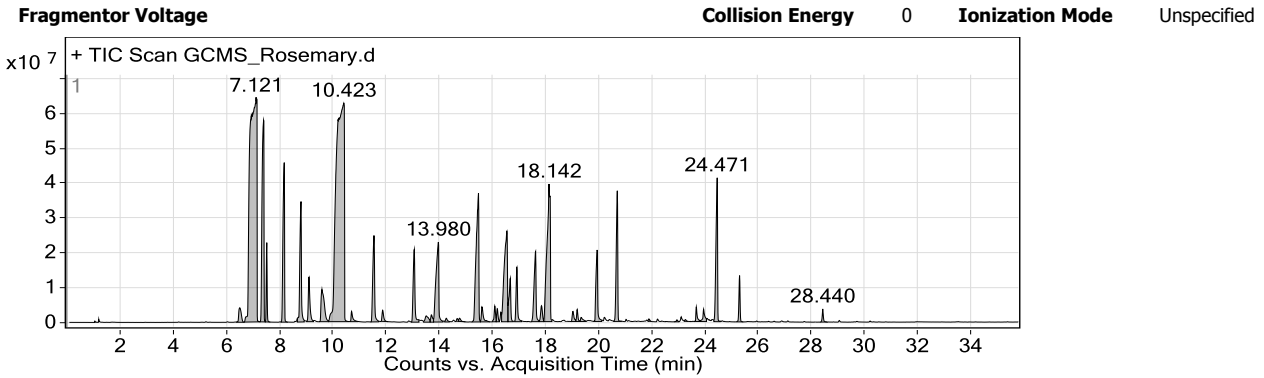


Qualitative Compound Report

Data File	GCMS_Rosemary.d	Sample Name	
Sample Type		Position	3
Instrument Name	Gans 7890B	User Name	
Acq Method	HP-5ms ESSENTIAL_EFIRNOE_MASLO.m	Acquired Time	2/16/2024 9:44:57 AM
IRM Calibration Status	Not Applicable	DA Method	Method12092017.m
Comment			

Expected Barcode		Sample Amount	
Dual Inj Vol	0.6	TuneName	atune.u
TunePath	D:\MassHunter\GCMS\1\5977	MSFirmwareVersion	6.00.19
OperatorName		RunCompletedFlag	True
Acquisition SW Version	MassHunter GC/MS Acquisition B.07.00 SP2.1654 29-Aug-2013 Copyright © 1989-2013 Agilent Technologies, Inc.		



User Chromatogram Peak List

RT	Height	Height %	Area	Area %	Area Sum %	Symmetry	Width
6.508	4144309.62	6.44	27226360.32	2.08	0.51	1.68	0.284
7.121	64341290.74	100	1159113500	88.46	21.63	0.15	0.6
7.404	57784486.76	89.81	285614557	21.8	5.33	0.27	0.192
7.523	22716487.04	35.31	49573862.59	3.78	0.92	0.81	0.174
8.182	45690421.61	71.01	182594183.4	13.94	3.41	0.28	0.238
8.813	34496962.62	53.62	140455275.8	10.72	2.62	0.48	0.256
9.115	12764308.5	19.84	54629129.6	4.17	1.02	1.63	0.256
9.599	9215939.02	14.32	76288395.02	5.82	1.42	2.9	0.338
10.423	62588318.8	97.28	1310264764	100	24.45	0.09	0.759
10.715	2901376.85	4.51	13042529.31	1	0.24	3.94	0.293
11.557	24737068.99	38.45	117370484.7	8.96	2.19	0.59	0.3
11.886	3125350.47	4.86	13391283.7	1.02	0.25	1.69	0.261
13.075	20840842	32.39	95673922.82	7.3	1.79	0.65	0.284
13.523	1786717	2.78	16129818.74	1.23	0.3	1.33	0.247
13.715	2083900	3.24	10302590.83	0.79	0.19	1.5	0.128
13.98	22909974.81	35.61	168741371.2	12.88	3.15	0.21	0.357
14.282	1065293.66	1.66	5433769.47	0.41	0.1	1.71	0.174
14.694	774210.04	1.2	2925688.87	0.22	0.05	1.02	0.094
14.776	931148.68	1.45	4534688.3	0.35	0.08	1.86	0.258
15.489	36889259.62	57.33	252341565.6	19.26	4.71	0.17	0.327
15.618	4302642.5	6.69	21721230.24	1.66	0.41	2.6	0.338
16.102	4478122.83	6.96	16203569.46	1.24	0.3	0.81	0.158
16.194	3734278.86	5.8	12910031.62	0.99	0.24	1.39	0.119
16.56	25983920.74	40.38	214560507.2	16.38	4	0.25	0.238
16.688	12423812.09	19.31	59395368.52	4.53	1.11	0.41	0.201
16.935	15619471.51	24.28	60943748.47	4.65	1.14	0.86	0.256
17.639	20070579.95	31.19	102298319.4	7.81	1.91	0.33	0.273

Qualitative Compound Report

17.858	4539214.97	7.05	21348754.98	1.63	0.4	1.13	0.165
18.142	39410422.94	61.25	337009815.5	25.72	6.29	0.38	0.311
19.047	2906477.81	4.52	13129667.2	1	0.24	2.09	0.166
19.203	3409903.23	5.3	11753411.36	0.9	0.22	1.07	0.155
19.349	1171081.99	1.82	7534644.21	0.58	0.14	6.01	0.238
19.953	20486676.34	31.84	93879384.81	7.16	1.75	0.53	0.311
20.712	37420385.1	58.16	143461321.2	10.95	2.68	0.41	0.293
21.901	702676.65	1.09	2418992.15	0.18	0.05	1.38	0.115
22.953	560734	0.87	2241223.31	0.17	0.04	1	0.173
23.273	505268.86	0.79	2027384.68	0.15	0.04	1.03	0.147
23.684	4134465.13	6.43	14502968.63	1.11	0.27	3.33	0.198
23.959	3498127.54	5.44	17857313.14	1.36	0.33	1.24	0.229
24.471	41205793.45	64.04	169194288.4	12.91	3.16	0.29	0.238
25.312	13255526.29	20.6	38586171.5	2.94	0.72	0.77	0.231
28.44	3765072.38	5.85	10791802.41	0.82	0.2	1.13	0.247

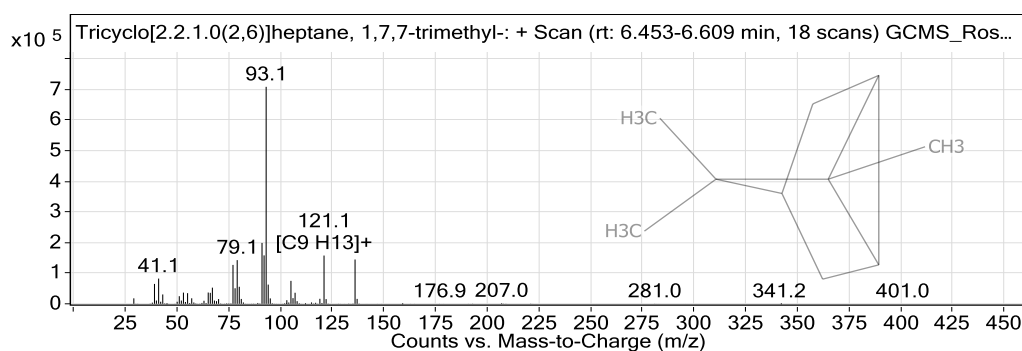
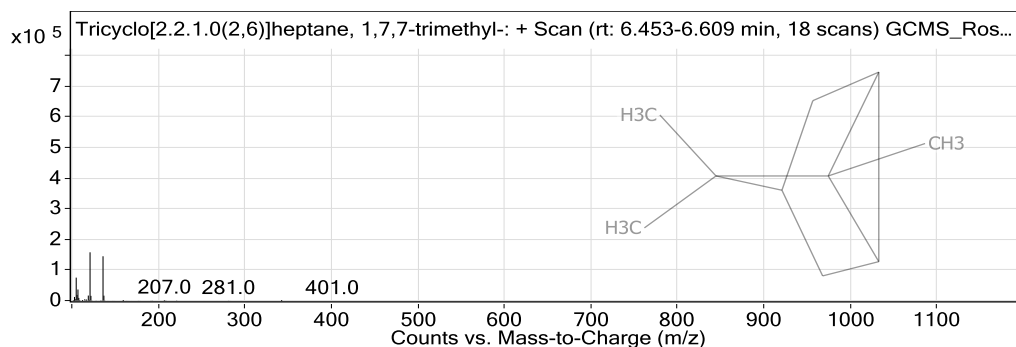
Compound Table

Compound Label	RT	Name	%
Cpd 1: Tricyclo[2.2.1.0(2,6)]heptane,	6.508	Tricyclo[2.2.1.0(2,6)]heptane, 1,7,7-trimethyl-	0.51
Cpd 2: .alpha.-Pinene	7.121	.alpha.-Pinene	21.63
Cpd 3: Camphene	7.404	Camphene	5.33
Cpd 4: Bicyclo[3.1.0]hex-2-ene, 4-methylene-1-(1-methylethyl)-	7.523	Bicyclo[3.1.0]hex-2-ene, 4-methylene-1-(1-methylethyl)-	0.92
Cpd 5: .beta.-Pinene	8.182	.beta.-Pinene	3.41
Cpd 6: .beta.-Myrcene	8.813	.beta.-Myrcene	2.62
Cpd 7: .alpha.-Phellandrene	9.115	.alpha.-Phellandrene	1.02
Cpd 8: (+)-4-Carene	9.599	(+)-4-Carene	1.42
Cpd 9: Eucalyptol	10.423	Eucalyptol	24.45
Cpd 10: trans-.beta.-Ocimene	10.715	trans-.beta.-Ocimene	0.24
Cpd 11: .gamma.-Terpinene	11.557	.gamma.-Terpinene	2.19
Cpd 12: 5-Isopropyl-2-methylbicyclo[3.1.0]hexan-2-	11.886	5-Isopropyl-2-methylbicyclo[3.1.0]hexan-2-	0.25
Cpd 13: Cyclohexene, 1-methyl-4-(1-methylethylidene)-	13.075	Cyclohexene, 1-methyl-4-(1-methylethylidene)-	1.79
Cpd 14: 5-Isopropyl-2-methylbicyclo[3.1.0]hexan-2-	13.523	5-Isopropyl-2-methylbicyclo[3.1.0]hexan-2-	0.3
Cpd 15: 2,6,6-Trimethylbicyclo[3.2.0]hept-2-en-7-one	13.715	2,6,6-Trimethylbicyclo[3.2.0]hept-2-en-7-one	0.19
Cpd 16: Linalool	13.98	Linalool	3.15
Cpd 17: Fenchol	14.282	Fenchol	0.1
Cpd 18: Bicyclo[3.1.1]hept-2-en-6-one, 2,7,7-trimethyl-	14.694	Bicyclo[3.1.1]hept-2-en-6-one, 2,7,7-trimethyl-	0.05
Cpd 19: 1,7,7-Trimethylbicyclo[2.2.1]hept-5-en-2-ol	14.776	1,7,7-Trimethylbicyclo[2.2.1]hept-5-en-2-ol	0.08
Cpd 20: Camphor	15.489	Camphor	4.71
Cpd 21: cis-Verbenol	15.618	cis-Verbenol	0.41
Cpd 22: Bicyclo[3.1.1]heptan-3-one, 2,6,6-trimethyl-, (1.alpha.,2.alpha.,5.alpha.)-	16.102	Bicyclo[3.1.1]heptan-3-one, 2,6,6-trimethyl-, (1.alpha.,2.alpha.,5.alpha.)-	0.3
Cpd 23: Pinocarvone	16.194	Pinocarvone	0.24
Cpd 24: endo-Borneol	16.56	endo-Borneol	4
Cpd 25: Bicyclo[3.1.1]heptan-3-one, 2,6,6-trimethyl-, (1.alpha.,2.beta.,5.alpha.)-	16.688	Bicyclo[3.1.1]heptan-3-one, 2,6,6-trimethyl-, (1.alpha.,2.beta.,5.alpha.)-	1.11
Cpd 26: Terpinen-4-ol	16.935	Terpinen-4-ol	1.14

Qualitative Compound Report

Cpd 27: .alpha.-Terpineol	17.639	.alpha.-Terpineol	1.91
Cpd 28: (-)-Myrtenol	17.858	(-)-Myrtenol	0.4
Cpd 29: D-Verbenone	18.142	D-Verbenone	6.29
Cpd 30: (-)-cis-Myrtanol	19.047	(-)-cis-Myrtanol	0.24
Cpd 31: Ethanol, 2-(3,3-dimethylcyclohexylidene)-,	19.203	Ethanol, 2-(3,3-dimethylcyclohexylidene)-,	0.22
Cpd 32: D-Carvone	19.349	D-Carvone	0.14
Cpd 33: Geraniol	19.953	Geraniol	1.75
Cpd 34: Bornyl acetate	20.712	Bornyl acetate	2.68
Cpd 35: Myrtenyl acetate	21.901	Myrtenyl acetate	0.05
Cpd 36: (-)-cis-Myrtanyl acetate	22.953	(-)-cis-Myrtanyl acetate	0.04
Cpd 37: Ylangene	23.273	Ylangene	0.04
Cpd 38: Geranyl acetate	23.684	Geranyl acetate	0.27
Cpd 39: 4,7,7-Trimethylbicyclo[4.1.0]hept-3	23.959	4,7,7-Trimethylbicyclo[4.1.0]hept-3	0.33
Cpd 40: Caryophyllene	24.471	Caryophyllene	3.16
Cpd 41: Humulene	25.312	Humulene	0.72
Cpd 42: Caryophyllene oxide	28.44	Caryophyllene oxide	0.2

Compound Label	Name	RT	Algorithm
Cpd 1: Tricyclo[2.2.1.0(2,6)]heptane, 1,7,7-trimethyl-	Tricyclo[2.2.1.0(2,6)]heptane, 1,7,7-trimethyl-	6.508	Spectrum Extraction

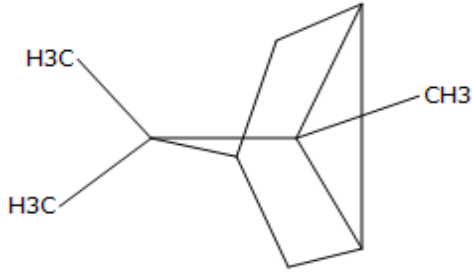


MS Spectrum Peak List

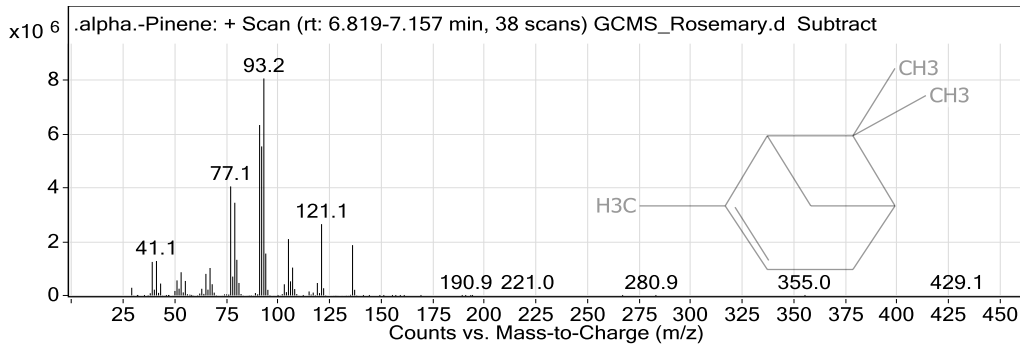
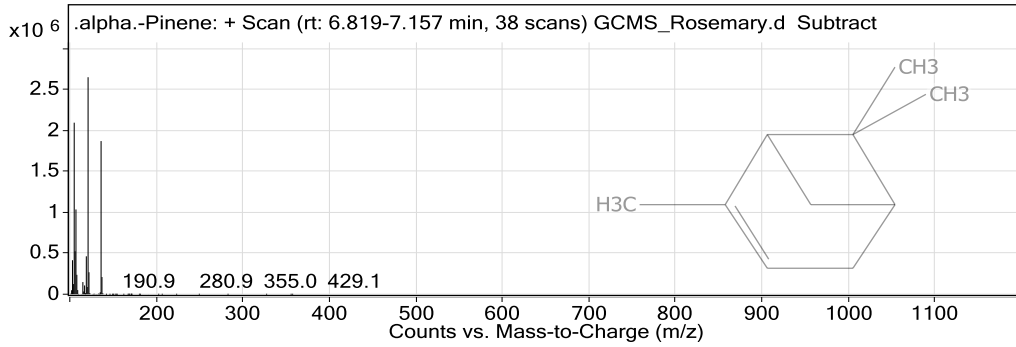
m/z	Calc m/z	Diff(ppm)	z	Abund
39.1				64919.52
41.1				82338.63
77.1				127014.88
79.1				142591.89
91.1				198677.13
92.1				158096.59
93.1				708326.38
105.1				74929.34

Qualitative Compound Report

121.1	121.1	12.01	1	157579.33
136.1				144627.25



Compound Label	Name	RT	Algorithm
Cpd 2: .alpha.-Pinene	.alpha.-Pinene	7.121	Spectrum Extraction

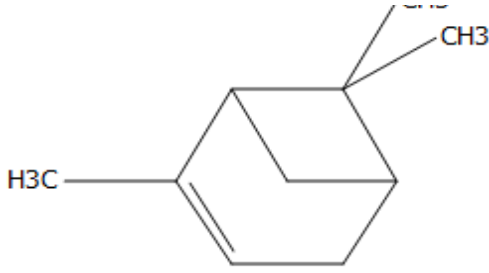


MS Spectrum Peak List

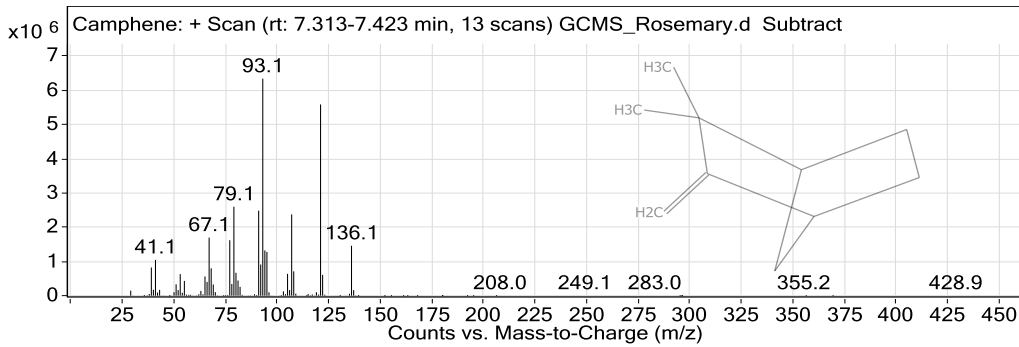
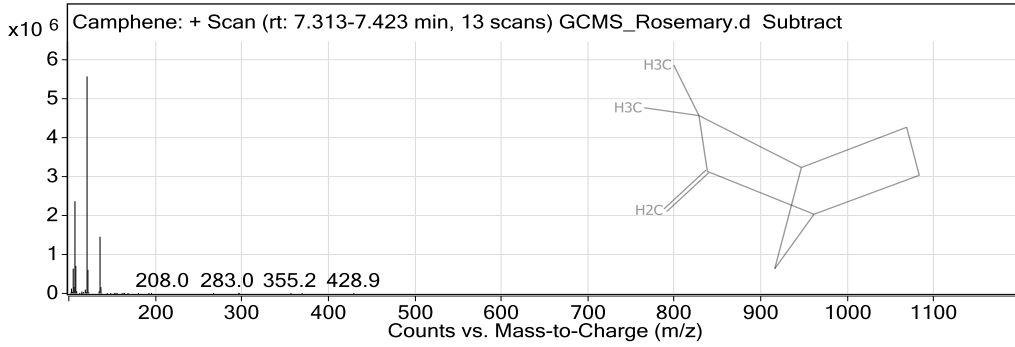
m/z	Abund
77.1	4056365.75
79.1	3448496.25
80.1	1325337.13
91.1	6339556
92.1	5543458
93.2	8070863
94.1	1558103.38
105.1	2097161.25
121.1	2652767.75
136.2	1872265

.CH3

Qualitative Compound Report



Compound Label	Name	RT	Algorithm
Cpd 3: Camphene	Camphene	7.404	Spectrum Extraction

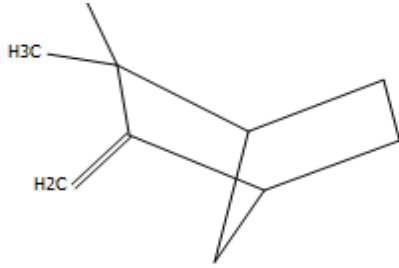


MS Spectrum Peak List

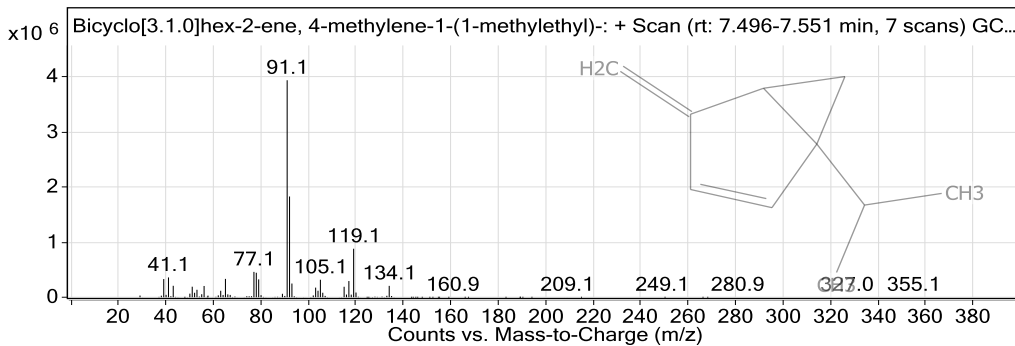
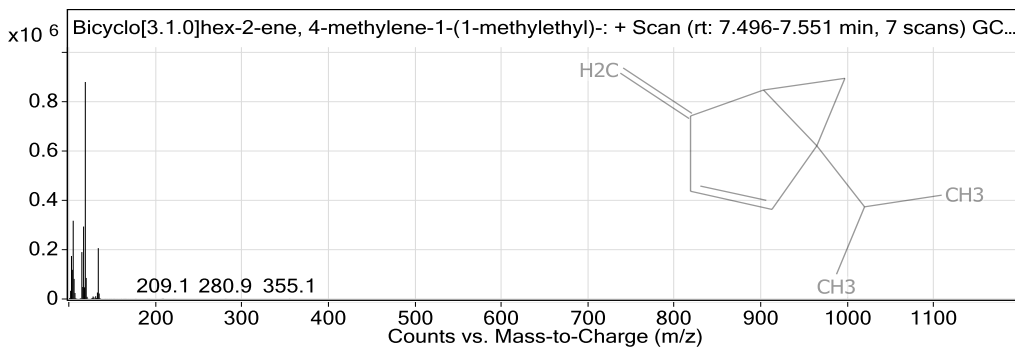
m/z	Calc m/z	Diff(ppm)	z	Abund
67.1				1697496.5
77.1				1620286.63
79.1				2598918.5
91.1				2482753.75
93.1				6340640
94.1				1322661.25
95.1				1278043
107.1				2374357
121.1	121.1	9.72	1	5587439.5
136.1				1457955

H3C

Qualitative Compound Report



Compound Label	Name	RT	Algorithm
Cpd 4: Bicyclo[3.1.0]hex-2-ene, 4-methylene-1-(1-methylethyl)-	Bicyclo[3.1.0]hex-2-ene, 4-methylene-1-(1-methylethyl)-	7.523	Spectrum Extraction

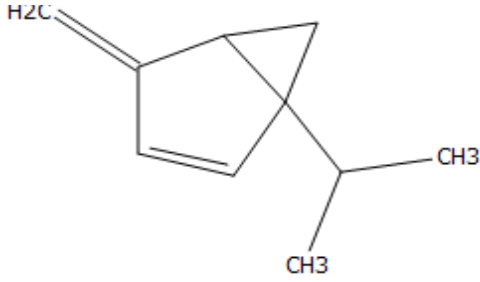


MS Spectrum Peak List

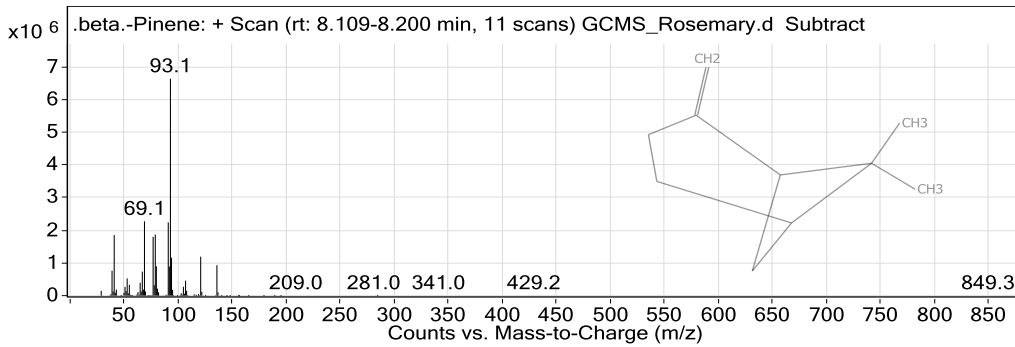
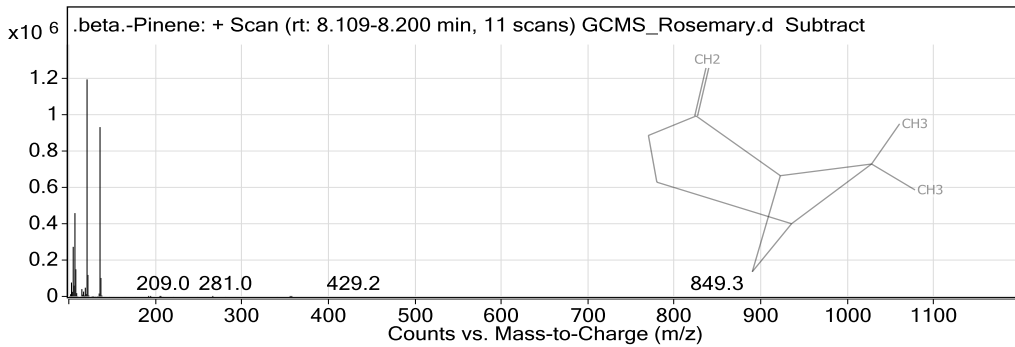
m/z	Abund
39.1	330070.44
41.1	358820.22
65.1	332624.69
77.1	459639.03
78.1	444072.28
79.1	323647.88
91.1	3933933.5
92.1	1826596.5
105.1	317182.91
119.1	879415.44

119.1

Qualitative Compound Report



Compound Label	Name	RT	Algorithm
Cpd 5: .beta.-Pinene	.beta.-Pinene	8.182	Spectrum Extraction

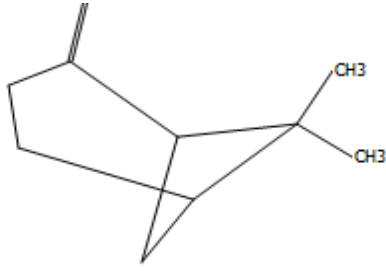


MS Spectrum Peak List

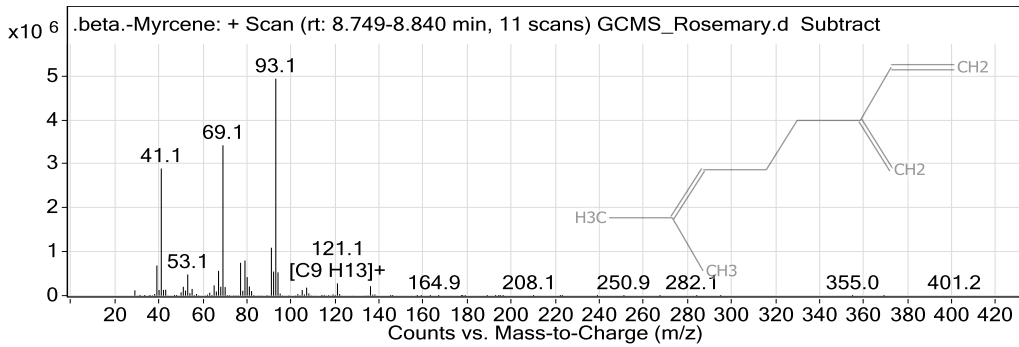
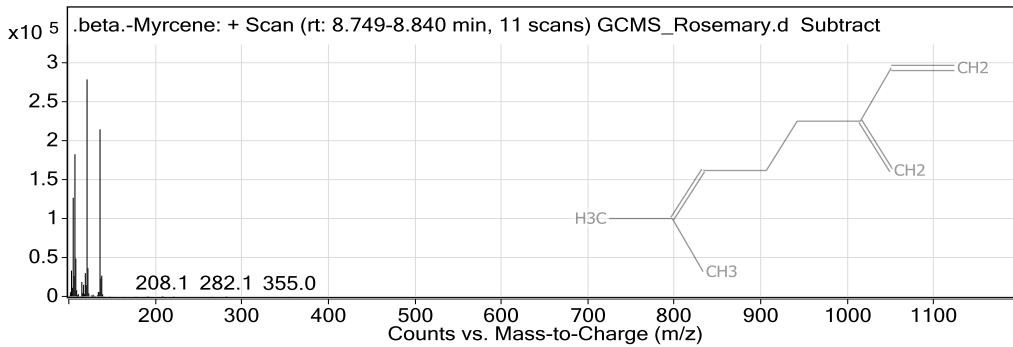
m/z	Calc m/z	Diff(ppm)	z	Abund
41.1				1851560
69.1				2271138.25
77.1				1796998.75
79.1				1867746.88
80.1				895168.19
91.1				2238185.75
93.1				6632389
94.1				1157442.13
121.1	121.1	9.3	1	1192339.5
136.1				930385.5

CH2
#

Qualitative Compound Report



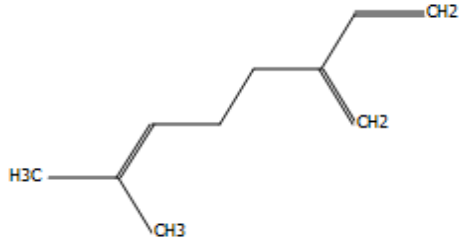
Compound Label	Name	RT	Algorithm
Cpd 6: .beta.-Myrcene	.beta.-Myrcene	8.813	Spectrum Extraction



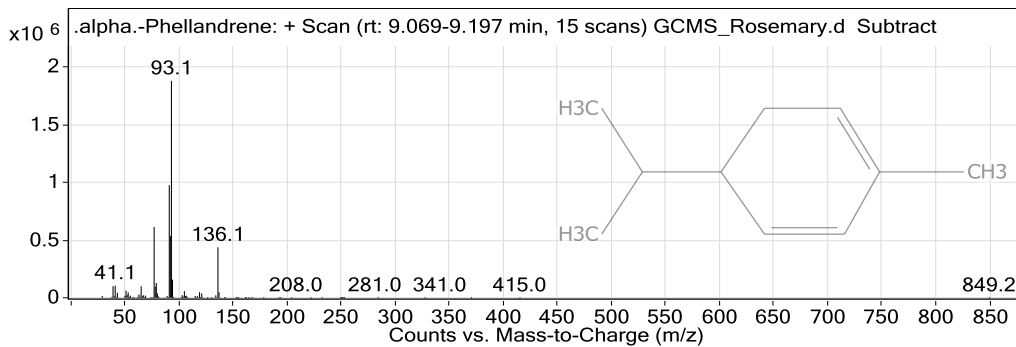
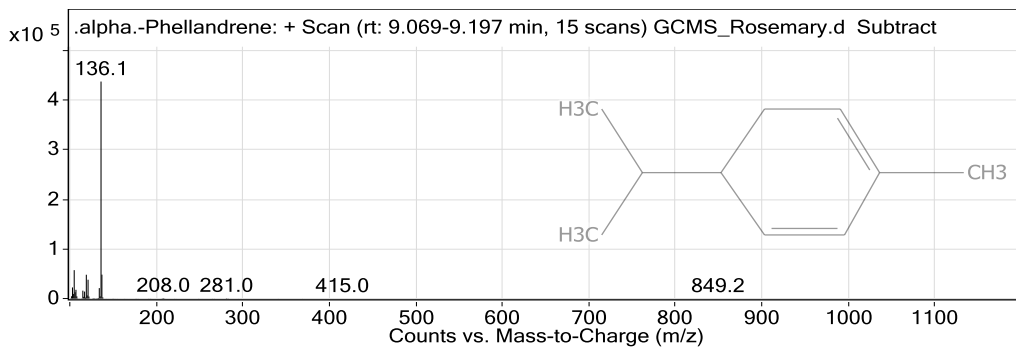
MS Spectrum Peak List

m/z	Abund
39.1	685795.69
41.1	2892043.5
67.1	563638.31
69.1	3421164
77.1	747774.25
79.1	799574.56
91.1	1090849.88
92.1	547444.31
93.1	4936875
94.1	530364

Qualitative Compound Report



Compound Label	Name	RT	Algorithm
Cpd 7: .alpha.-Phellandrene	.alpha.-Phellandrene	9.115	Spectrum Extraction

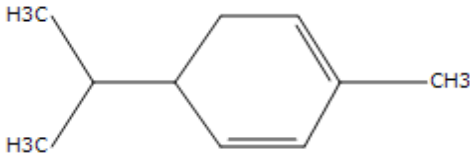


MS Spectrum Peak List

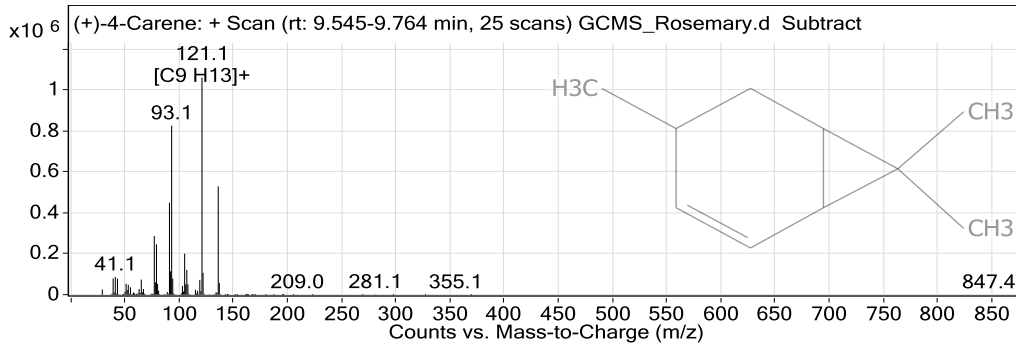
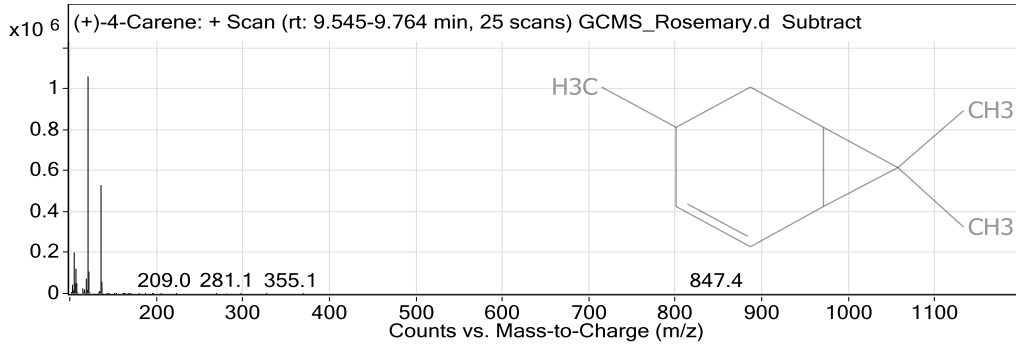
m/z	Abund
39.1	99930.66
41.1	105360.8
65.1	99319.54
77.1	613379.88

Qualitative Compound Report

m/z	Abund
79.1	128132.03
91.1	975904.81
92.1	537569.31
93.1	1880825
94.1	157365.67
136.1	437509.5



Compound Label	Name	RT	Algorithm
Cpd 8: (+)-4-Carene	(+)-4-Carene	9.599	Spectrum Extraction

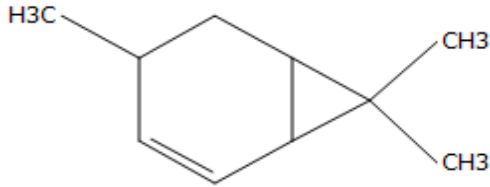


MS Spectrum Peak List

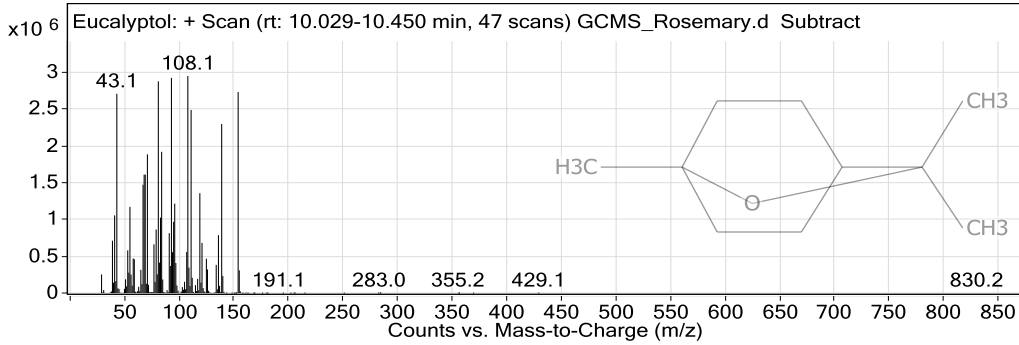
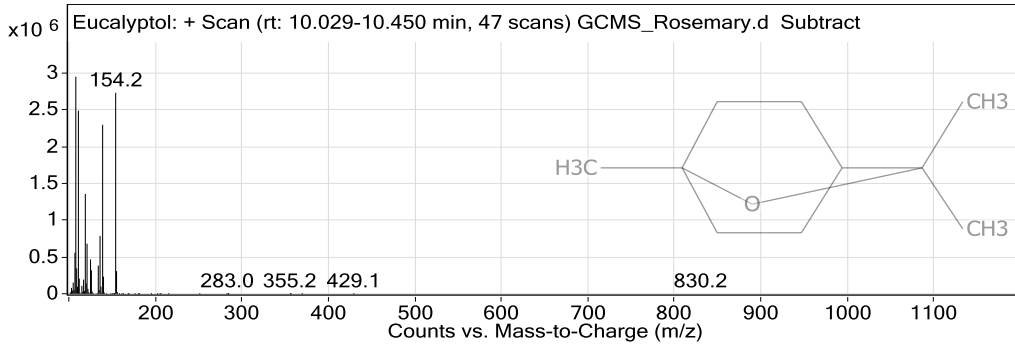
m/z	Calc m/z	Diff(ppm)	z	Abund
77.1				286721.16
79.1				245798.41
91.1				449685.09
92.1				114310.7
93.1				826262.75
105.1				200806.88
107.1				121748.63
121.1	121.1	9.68	1	1060940.63
122.1			1	106640.78

Qualitative Compound Report

136.1			529795.75
-------	--	--	-----------



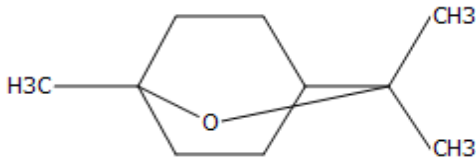
Compound Label	Name	RT	Algorithm
Cpd 9: Eucalyptol	Eucalyptol	10.423	Spectrum Extraction



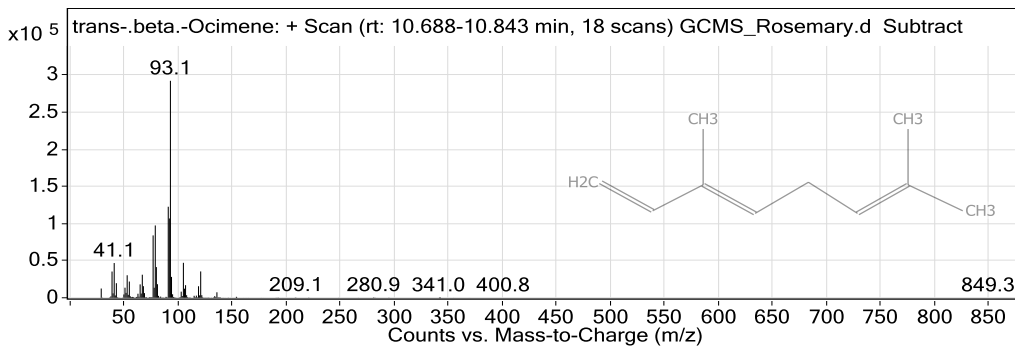
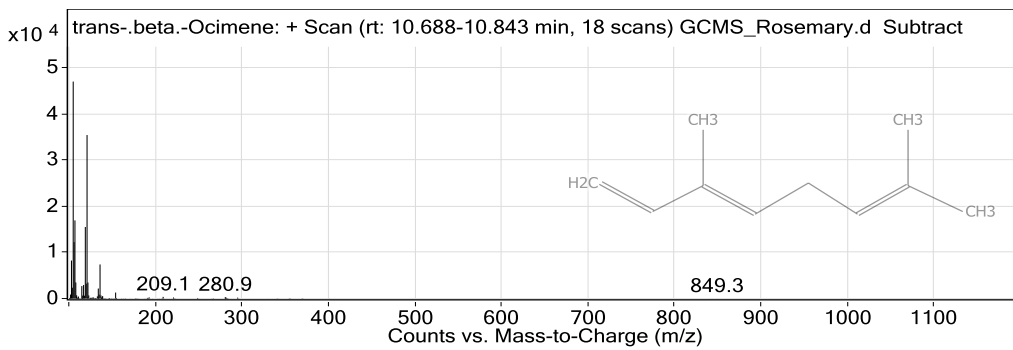
MS Spectrum Peak List

m/z	Abund
43.1	2712093.25
69.1	1612230.88
71.1	1886739.13
81.1	2880880.25
84.1	1922014
93.1	2928150.75
108.1	2953342.25
111.1	2491645.5
139.1	2300115.25
154.2	2735124

Qualitative Compound Report



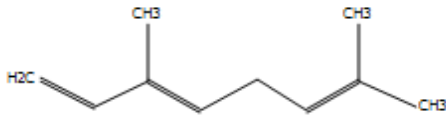
Compound Label	Name	RT	Algorithm
Cpd 10: trans-.beta.-Ocimene	trans-.beta.-Ocimene	10.715	Spectrum Extraction



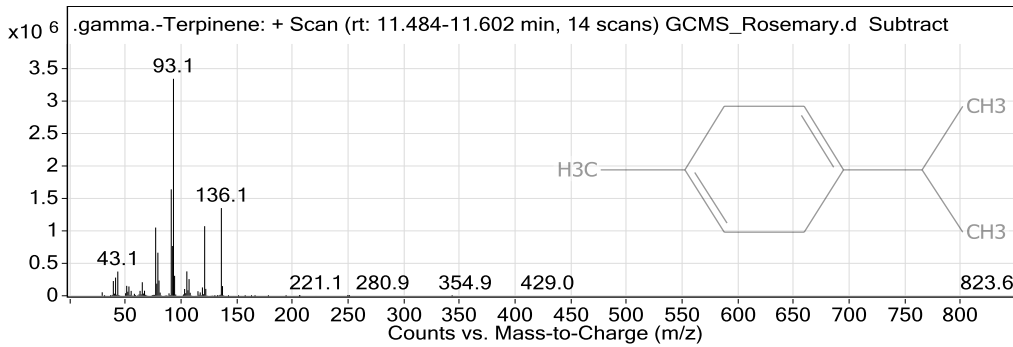
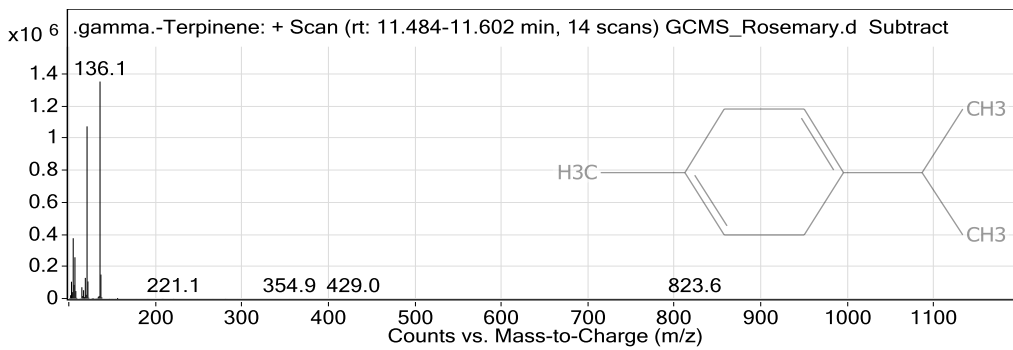
MS Spectrum Peak List

m/z	Abund
39.1	35344.78
41.1	46776.5
77.1	83991.39
79.1	97373.61
80.1	41335.05
91.1	122583.66
92.1	106771.67
93.1	292126.66
105.1	47086.95
121.1	35478.34

Qualitative Compound Report



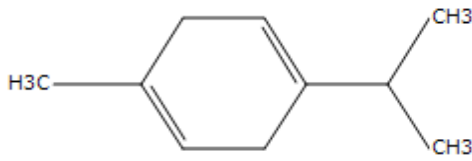
Compound Label	Name	RT	Algorithm
Cpd 11: .gamma.-Terpinene	.gamma.-Terpinene	11.557	Spectrum Extraction



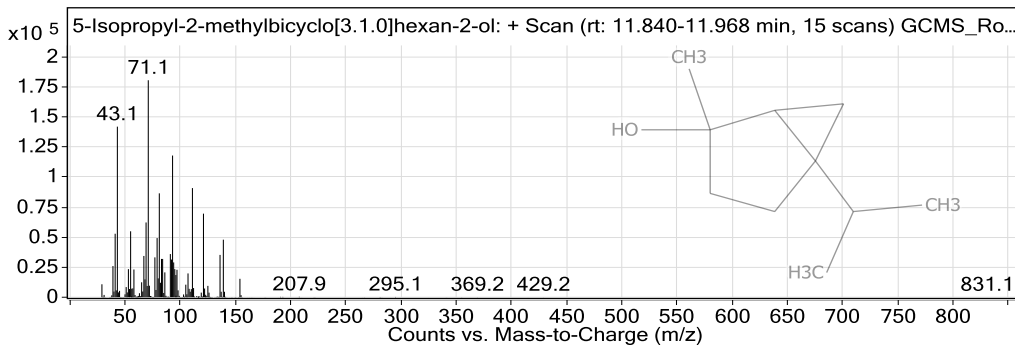
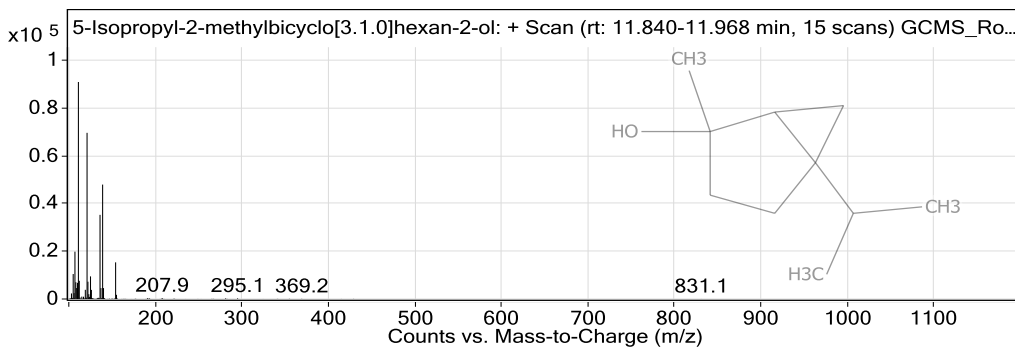
MS Spectrum Peak List

m/z	Calc m/z	Diff(ppm)	z	Abund
43.1				374024.66
77.1				1052736.88
79.1				664703.06
91.1				1642153.38
92.1				767830.56
93.1				3347696
94.1				307927.31
105.1				376169.38
121.1	121.1	10.05	1	1073726.75
136.1				1353229.88

Qualitative Compound Report



Compound Label	Name	RT	Algorithm
Cpd 12: 5-Isopropyl-2-methylbicyclo[3.1.0]hexan-2-ol	5-Isopropyl-2-methylbicyclo[3.1.0]hexan-2-ol	11.886	Spectrum Extraction

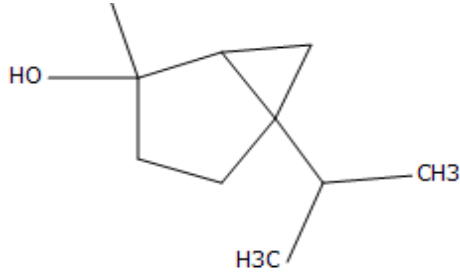


MS Spectrum Peak List

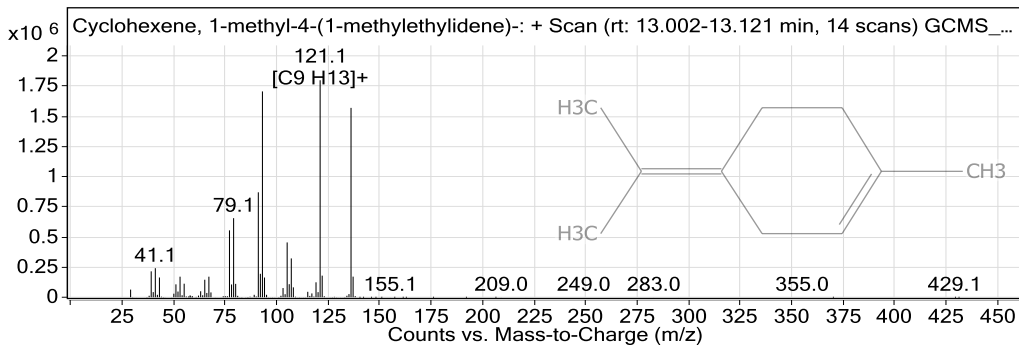
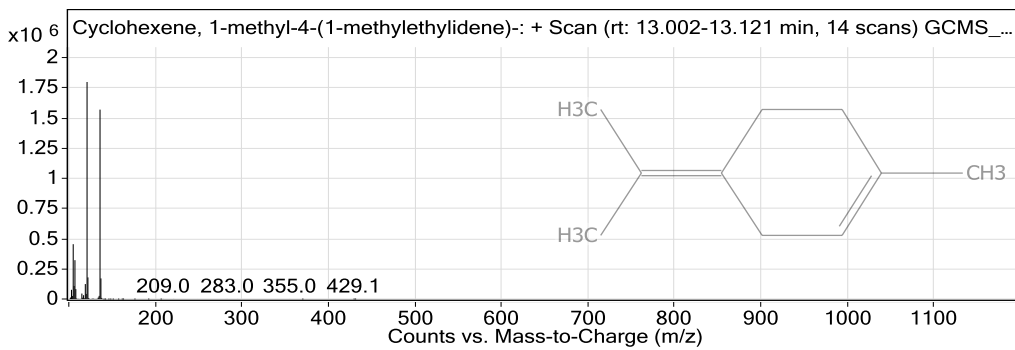
m/z	Calc m/z	Diff(ppm)	z	Abund
41.1				52844.45
43.1				141962.88
55.1				54881.5
69.1				62225.56
71.1				180578.8
79.1				49249.64
81.1				86468.49
93.1				117924.27
111.1				90842.52
121.1	121.1	12.76	1	69566.11

CH3
HO

Qualitative Compound Report



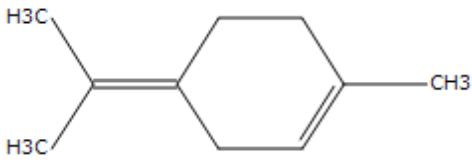
Compound Label	Name	RT	Algorithm
Cpd 13: Cyclohexene, 1-methyl-4-(1-methylethylidene)-	Cyclohexene, 1-methyl-4-(1-methylethylidene)-	13.075	Spectrum Extraction



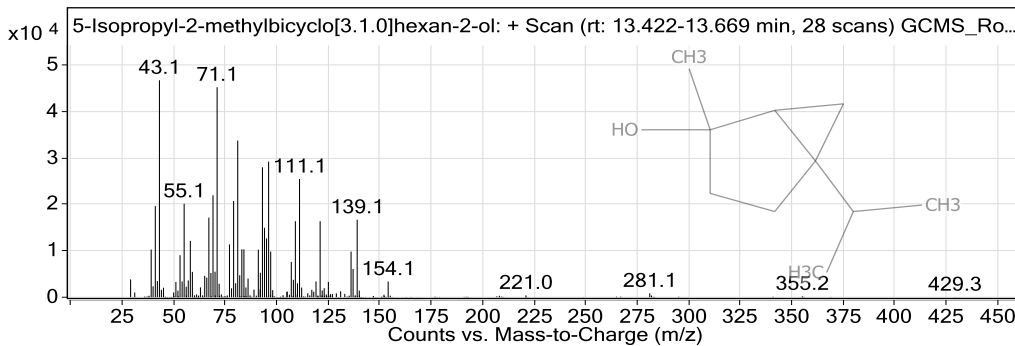
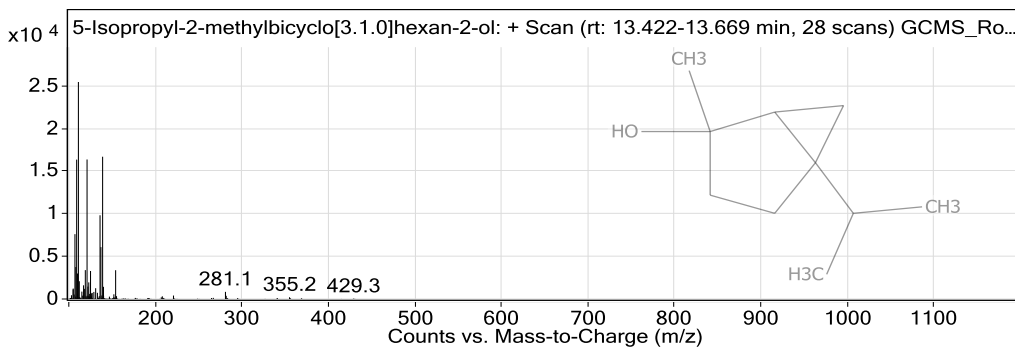
MS Spectrum Peak List

m/z	Calc m/z	Diff(ppm)	z	Abund
39.1				214774.11
41.1				240859.92
77.1				554479.5
79.1				655709.13
91.1				870174.63
93.1				1706921.88
105.1				454480.5
107.1				321899.78
121.1	121.1	9.98	1	1799419.5
136.1				1570380.63

Qualitative Compound Report



Compound Label	Name	RT	Algorithm
Cpd 14: 5-Isopropyl-2-methylbicyclo[3.1.0]hexan-2-ol	5-Isopropyl-2-methylbicyclo[3.1.0]hexan-2-ol	13.523	Spectrum Extraction

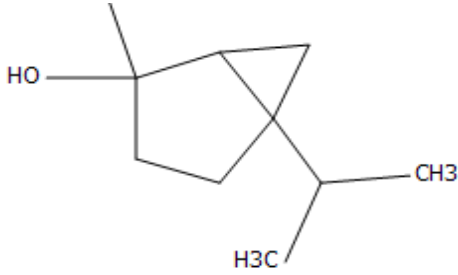


MS Spectrum Peak List

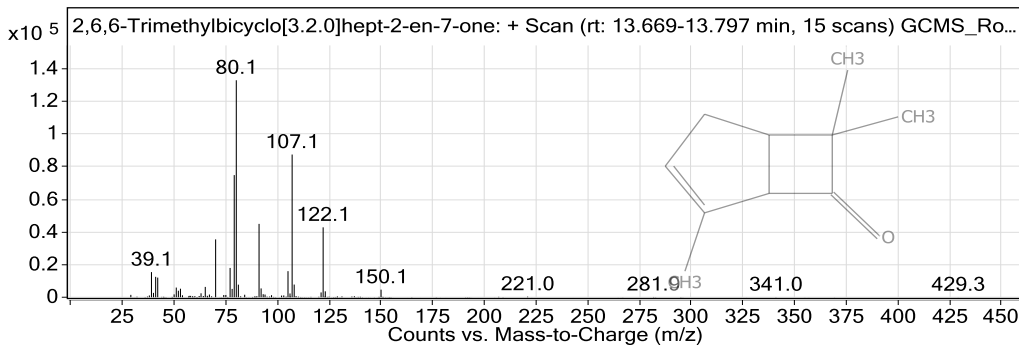
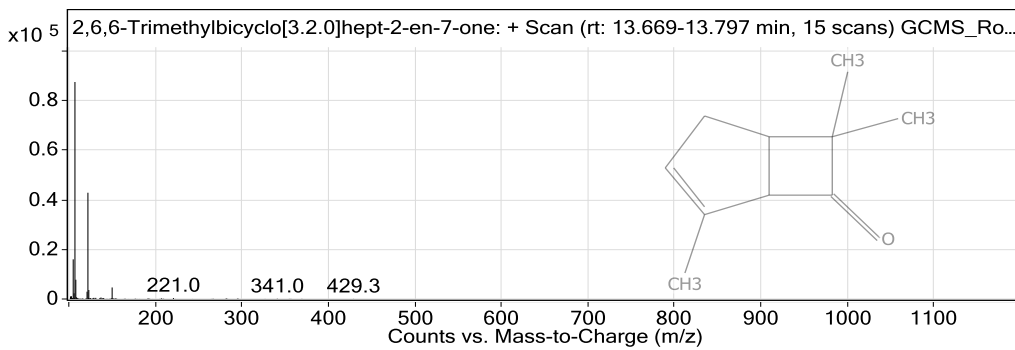
m/z	Calc m/z	Diff(ppm)	z	Abund
41.1				19594.93
43.1				46652.96
55.1				20107.11
69.1				21919.79
71.1				45148.93
79.1				20697.93
81.1				33683.36
93.1				27938.57
96.1	96.1	8.28	1	29148.54
111.1				25426.61

CH3
1

Qualitative Compound Report



Compound Label	Name	RT	Algorithm
Cpd 15: 2,6,6-Trimethylbicyclo[3.2.0]hept-2-en-7-one	2,6,6-Trimethylbicyclo[3.2.0]hept-2-en-7-one	13.715	Spectrum Extraction

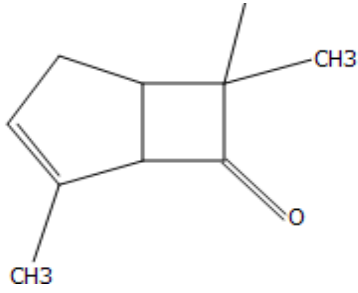


MS Spectrum Peak List

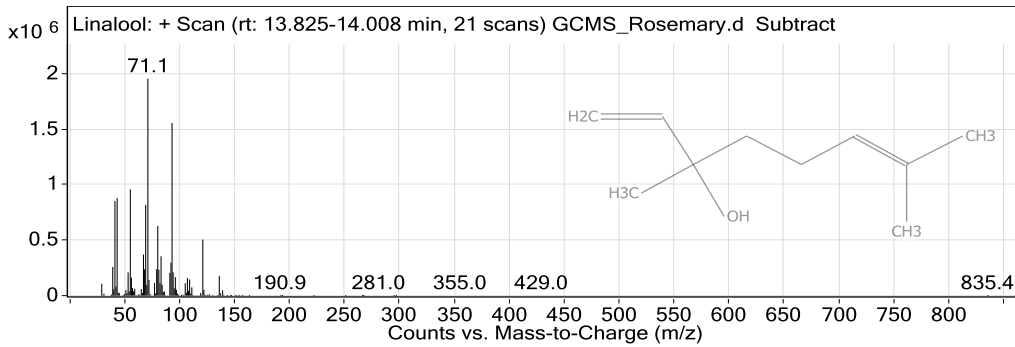
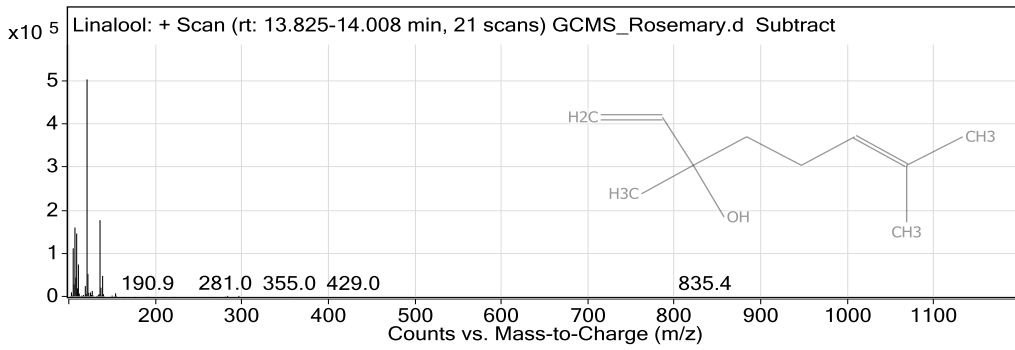
m/z	Abund
39.1	15397.1
41.1	12505.33
70.1	35455.73
77.1	17951.73
79.1	74857.07
80.1	132996
91.1	44962.93
105.1	15984.8
107.1	87474.4
122.1	42840.04

CH3

Qualitative Compound Report



Compound Label	Name	RT	Algorithm
Cpd 16: Linalool	Linalool	13.98	Spectrum Extraction

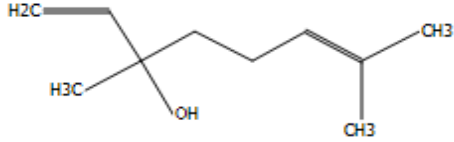


MS Spectrum Peak List

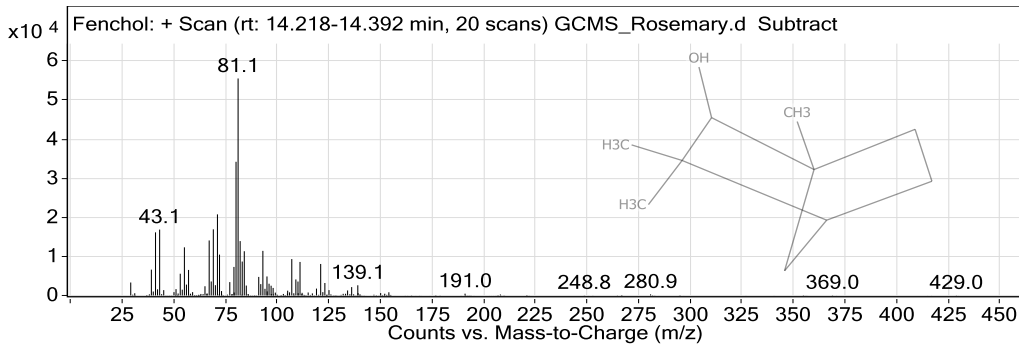
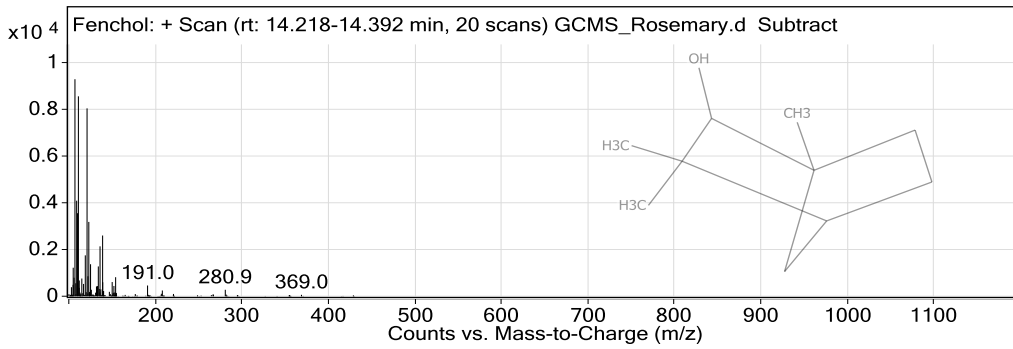
m/z	Calc m/z	Diff(ppm)	z	Abund
41.1				851337.94
43.1				876852.19
55.1				956586.56
67.1				370028.56
69.1				815860.31
71.1				1951673.63
80.1				626385.75
83.1				354399.19
93.1				1552525.75

Qualitative Compound Report

m/z	Calc m/z	Diff(ppm)	z	Abund
121.1	121.1	7.84	1	503884.88



Compound Label	Name	RT	Algorithm
Cpd 17: Fenchol	Fenchol	14.282	Spectrum Extraction

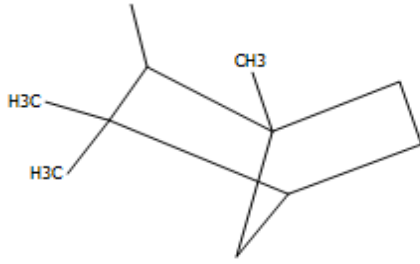


MS Spectrum Peak List

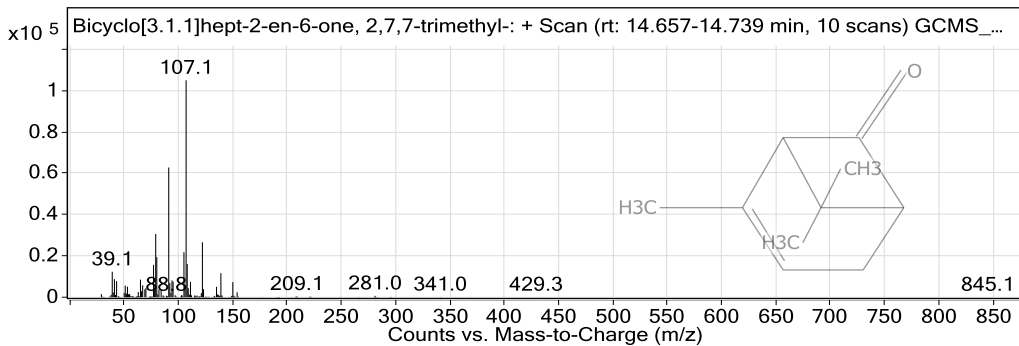
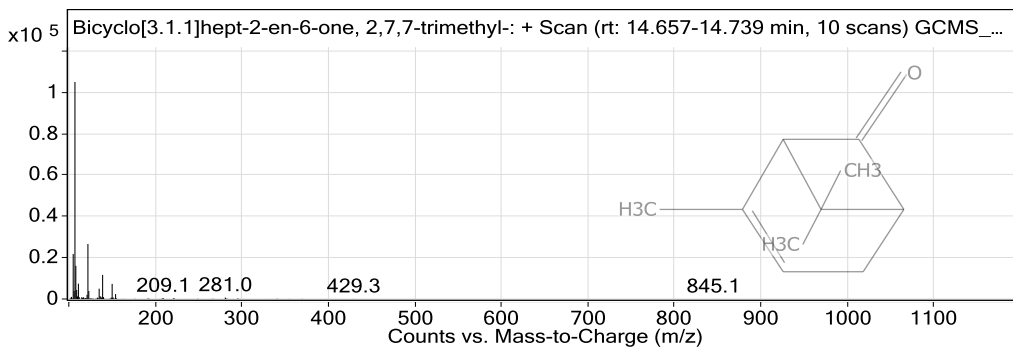
m/z	Abund
41.1	16147.99
43.1	16860.22
55.1	12316.51
67.1	14073.73
69.1	16923.73
71.1	20752.05
80.1	34208.59
81.1	55529.91
82.1	13912.82
93.1	11412.87

OH

Qualitative Compound Report



Compound Label	Name	RT	Algorithm
Cpd 18: Bicyclo[3.1.1]hept-2-en-6-one, 2,7,7-trimethyl-	Bicyclo[3.1.1]hept-2-en-6-one, 2,7,7-trimethyl-	14.694	Spectrum Extraction

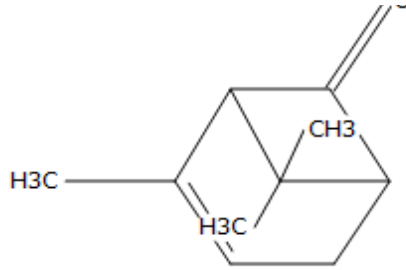


MS Spectrum Peak List

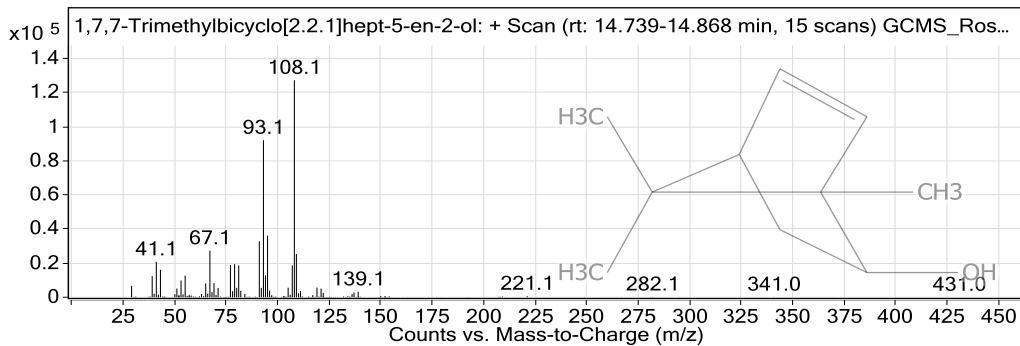
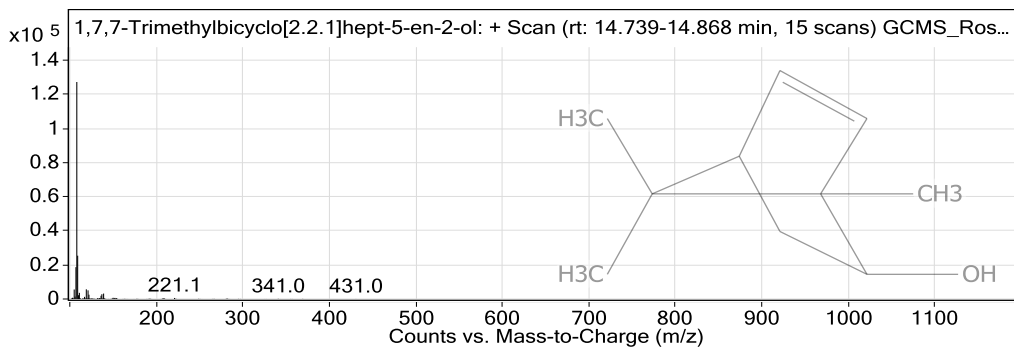
m/z	Abund
39.1	12317
77.1	15663.3
79.1	30621
80.1	19427.9
91.1	62763.4
105.1	21800.9
107.1	104970.1
108.1	16047.7
122.1	26599
139.1	11668

1.0

Qualitative Compound Report



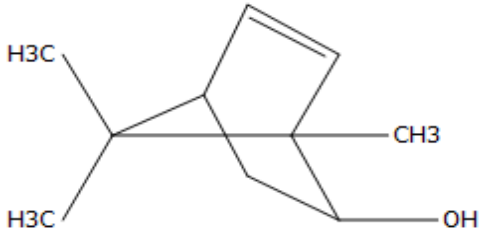
Compound Label	Name	RT	Algorithm
Cpd 19: 1,7,7-Trimethylbicyclo[2.2.1]hept-5-en-2-ol	1,7,7-Trimethylbicyclo[2.2.1]hept-5-en-2-ol	14.776	Spectrum Extraction



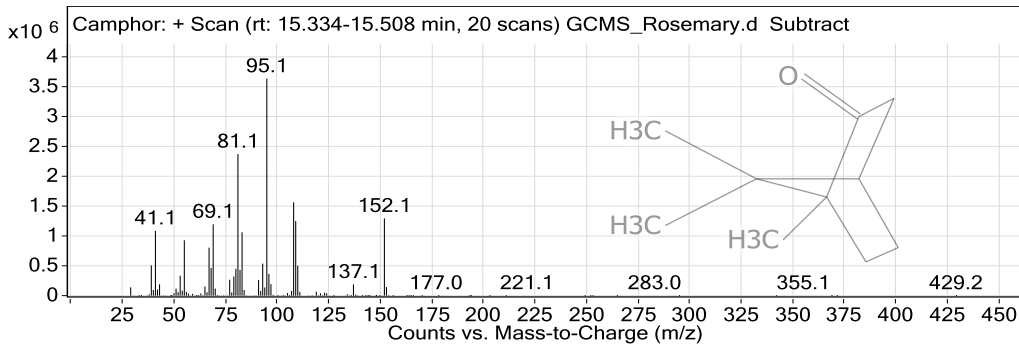
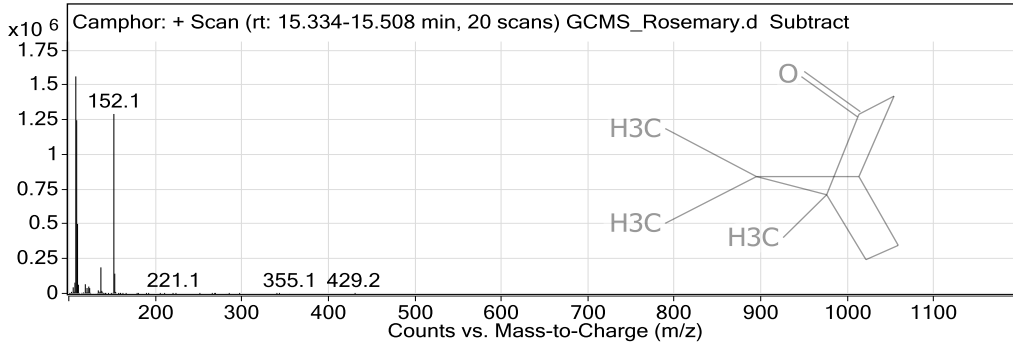
MS Spectrum Peak List

m/z	Abund
41.1	20765.89
67.1	27308.12
77.1	18816.91
79.1	19379.74
91.1	32802.9
93.1	92024.17
95.1	36048.79
107.1	18664.99
108.1	127166.4
109.1	25380.29

Qualitative Compound Report



Compound Label	Name	RT	Algorithm
Cpd 20: Camphor	Camphor	15.489	Spectrum Extraction

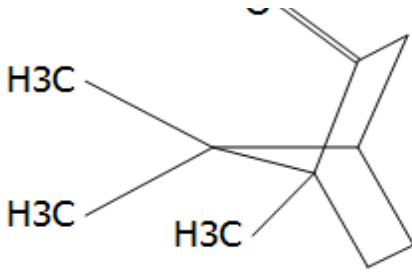


MS Spectrum Peak List

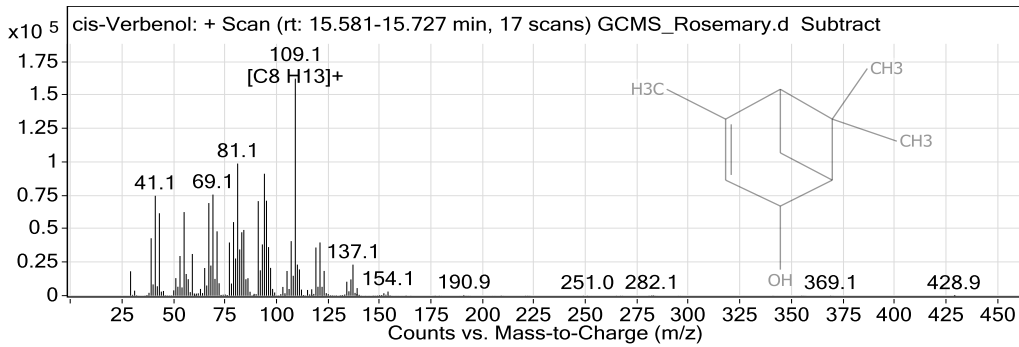
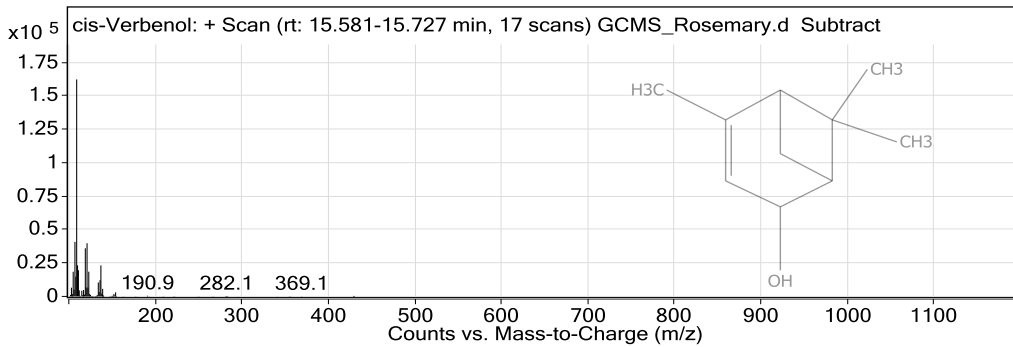
m/z	Calc m/z	Diff(ppm)	z	Abund
41.1				1083495
55.1				926596.63
67.1				802287.88
69.1				1193333.88
81.1				2367415.5
83.1				1059837.13
95.1				3627360.5
108.1				1561626.13
109.1	109.1	11.57	1	1246256.5
152.1				1291326.75

O

Qualitative Compound Report



Compound Label	Name	RT	Algorithm
Cpd 21: cis-Verbenol	cis-Verbenol	15.618	Spectrum Extraction

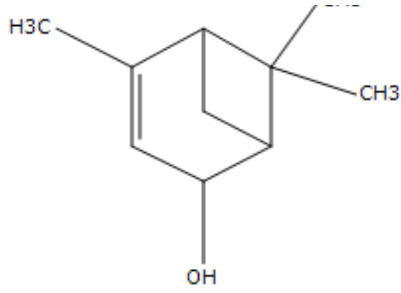


MS Spectrum Peak List

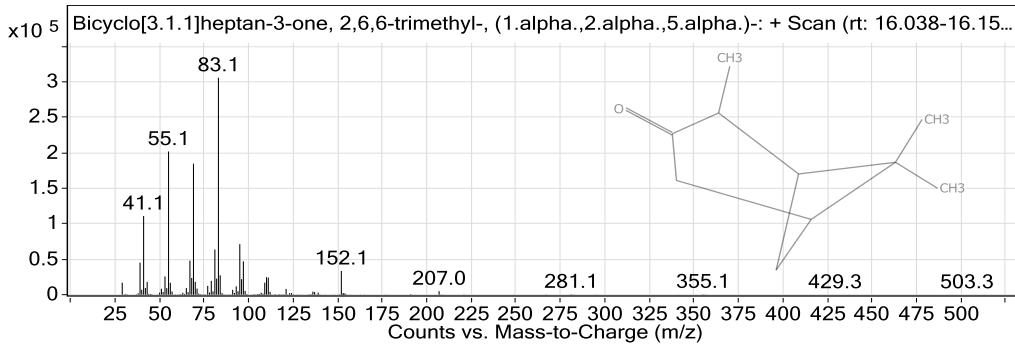
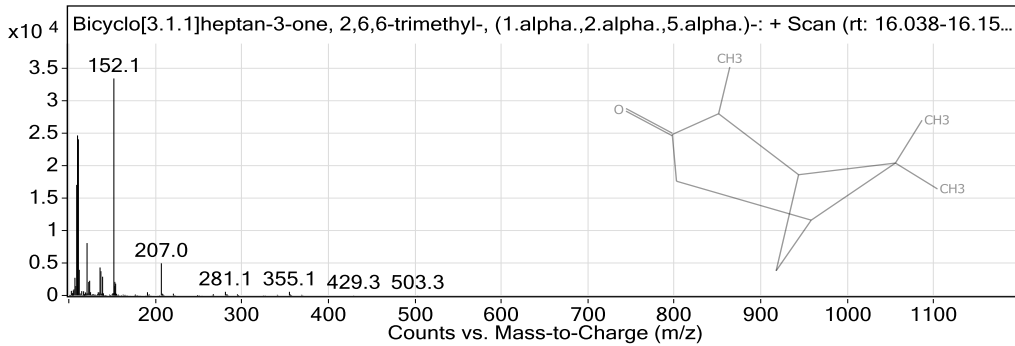
m/z	Calc m/z	Diff(ppm)	z	Abund
41.1				74674.27
43.1				61627.82
55.1				62498.47
67.1				69245.41
69.1				75581.85
81.1				98786
91.1				70700.35
94.1				91176
95.1				71006.38
109.1	109.1	10.79	1	162273.94

,CH3

Qualitative Compound Report



Compound Label	Name	RT	Algorithm
Cpd 22: Bicyclo[3.1.1]heptan-3-one, 2,6,6-trimethyl-, (1.alpha.,2.alpha.,5.alpha.)-	Bicyclo[3.1.1]heptan-3-one, 2,6,6-trimethyl-, (1.alpha.,2.alpha.,5.alpha.)-	16.102	Spectrum Extraction



MS Spectrum Peak List

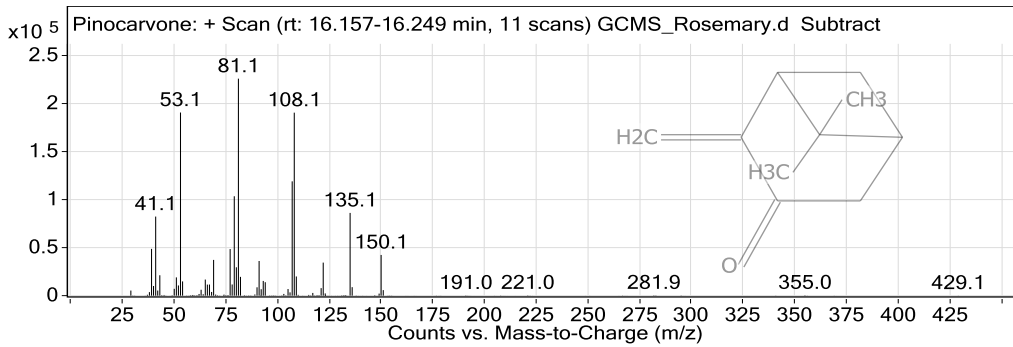
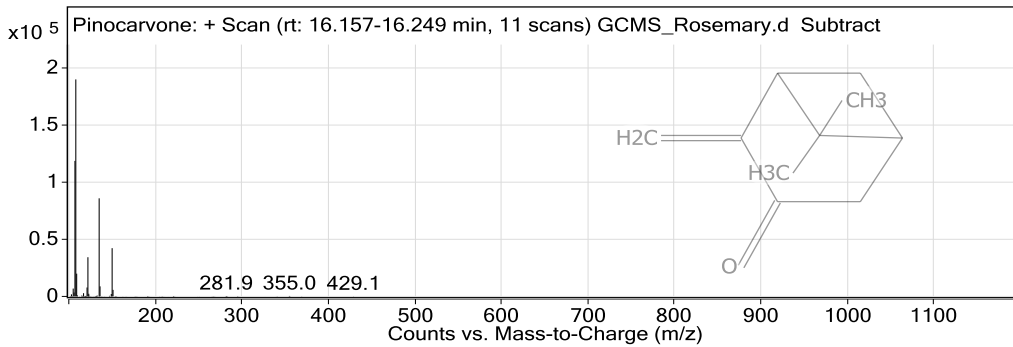
m/z	Calc m/z	Diff(ppm)	z	Abund
39.1				45175.5
41.1				111016.36
55.1				201985.78
67.1				48036
69.1				184863.42
81.1				63711.71
83.1				306079.72
95.1				71264.29
97.1	97.1	12.12	1	47100.43
152.1				33498.07

CH3

Qualitative Compound Report



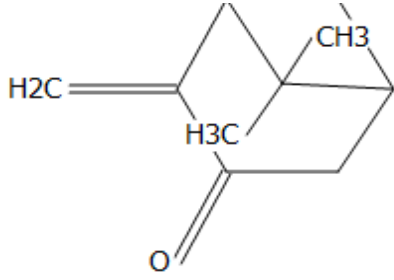
Compound Label	Name	RT	Algorithm
Cpd 23: Pinocarvone	Pinocarvone	16.194	Spectrum Extraction



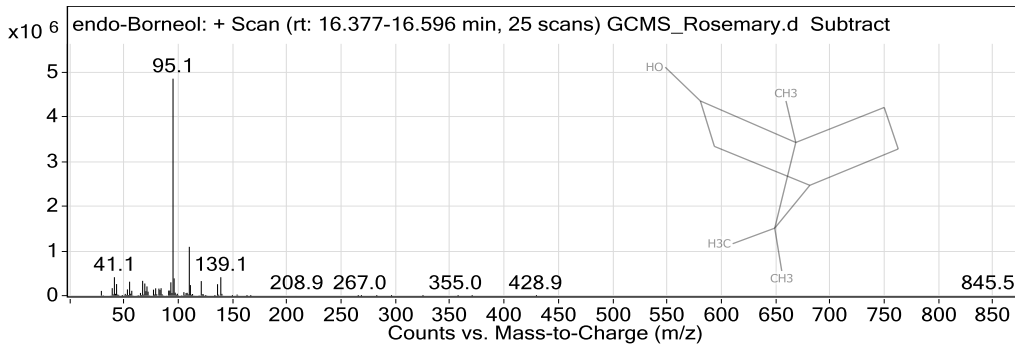
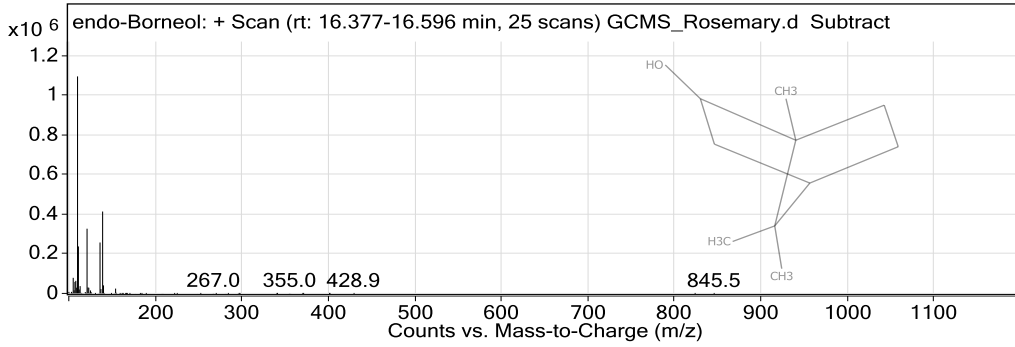
MS Spectrum Peak List

m/z	Abund
39.1	48671.13
41.1	82288
53.1	190539.27
77.1	48472.45
79.1	103418.55
81.1	225765.47
107.1	118928.36
108.1	190401.09
135.1	86086
150.1	42341.32

Qualitative Compound Report



Compound Label	Name	RT	Algorithm
Cpd 24: endo-Borneol	endo-Borneol	16.56	Spectrum Extraction

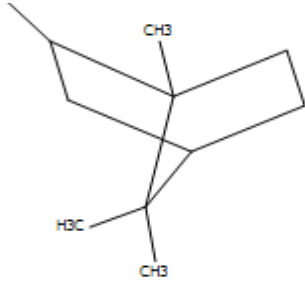


MS Spectrum Peak List

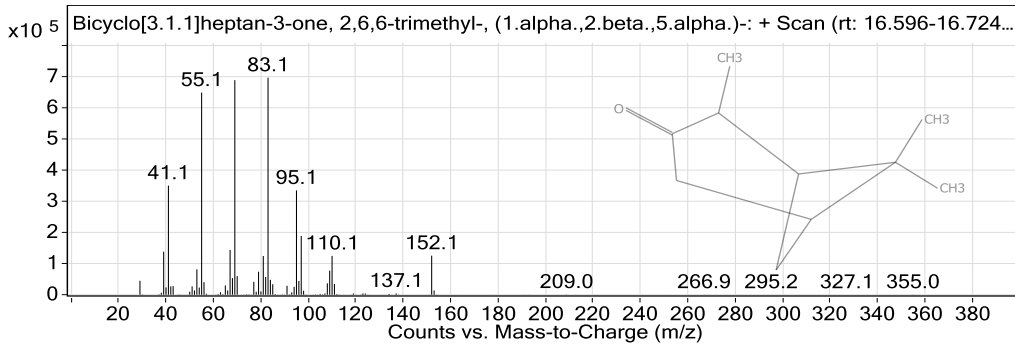
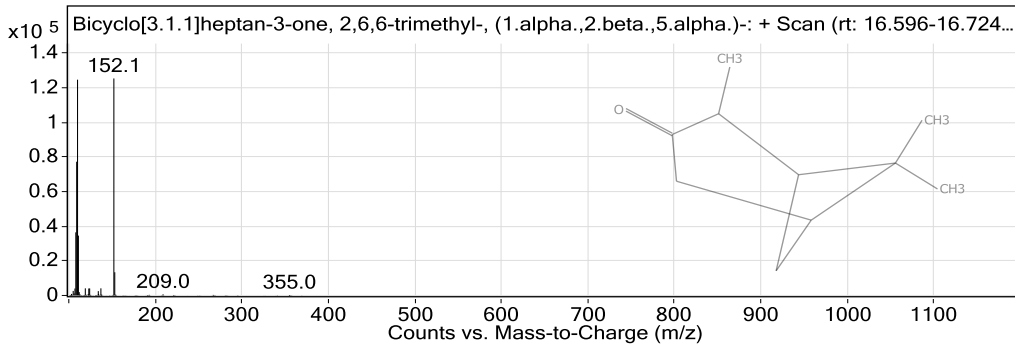
m/z	Calc m/z	Diff(ppm)	z	Abund
41.1				412714.25
55.1				312623.84
67.1				331661.59
69.1				271973.75
93.1				298745.28
95.1				4861504
96.1				387110.41
110.1				1093861.88
121.1	121.1	9.72	1	326237.28
139.1				412839.19

HO

Qualitative Compound Report



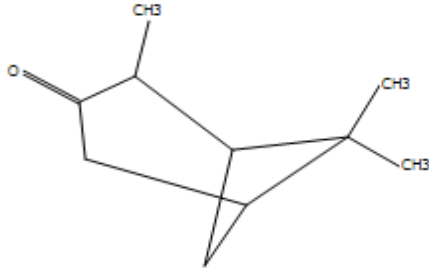
Compound Label	Name	RT	Algorithm
Cpd 25: Bicyclo[3.1.1]heptan-3-one, 2,6,6-trimethyl-, (1.alpha.,2.beta.,5.alpha.)-	Bicyclo[3.1.1]heptan-3-one, 2,6,6-trimethyl-, (1.alpha.,2.beta.,5.alpha.)-	16.688	Spectrum Extraction



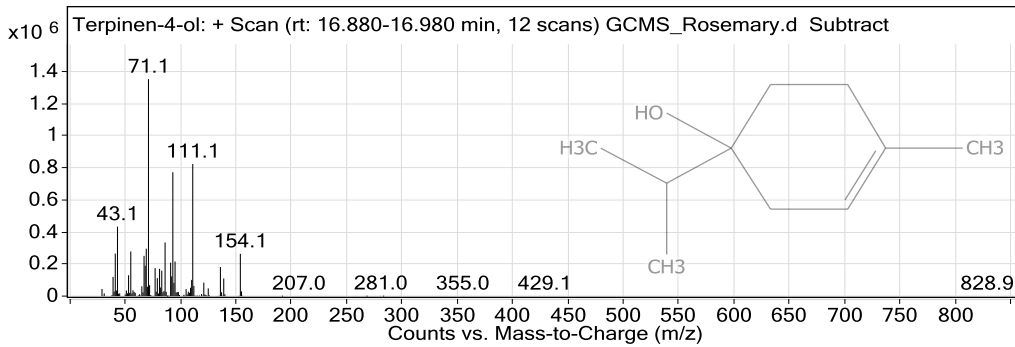
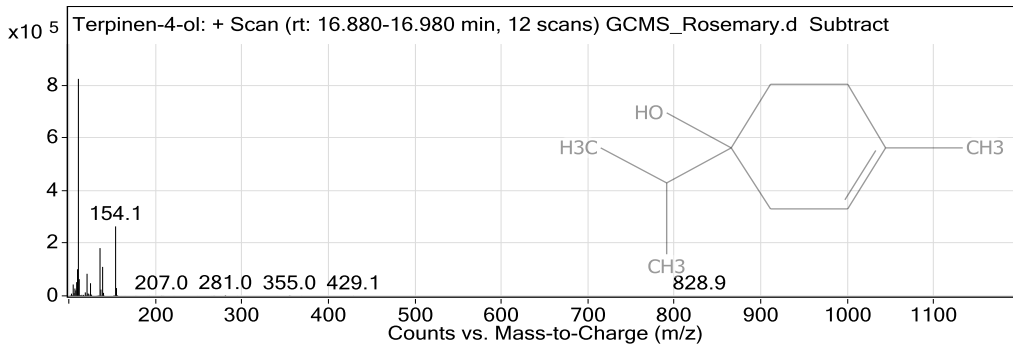
MS Spectrum Peak List

m/z	Calc m/z	Diff(ppm)	z	Abund
39.1				138232.47
41.1				350746.88
55.1				650179.56
67.1				143899.33
69.1				689995.44
83.1				697908.06
95.1				335467.19
97.1	97.1	12.12	1	188795.27
110.1				124770.91
152.1				125478.33

Qualitative Compound Report



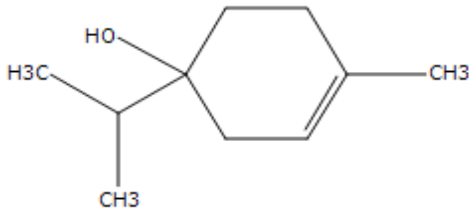
Compound Label	Name	RT	Algorithm
Cpd 26: Terpinen-4-ol	Terpinen-4-ol	16.935	Spectrum Extraction



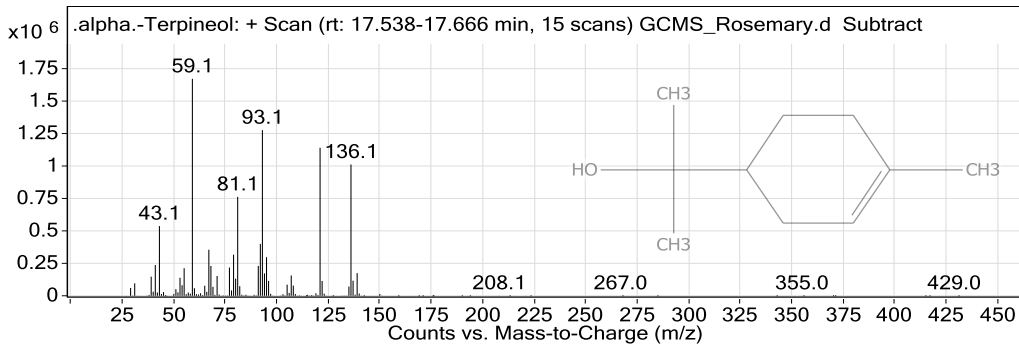
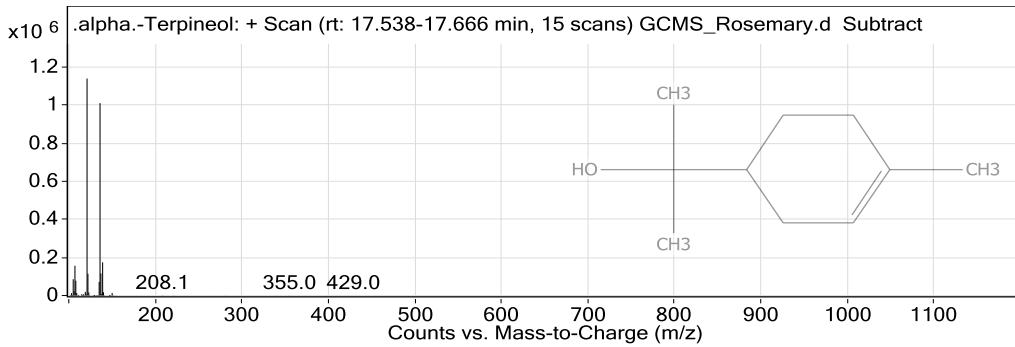
MS Spectrum Peak List

m/z	Abund
41.1	265114.72
43.1	433102.53
55.1	277973.47
67.1	250821.36
69.1	295598.38
71.1	1352551.63
86.1	334489.03
93.1	771900.44
111.1	823449.06
154.1	263600.19

Qualitative Compound Report



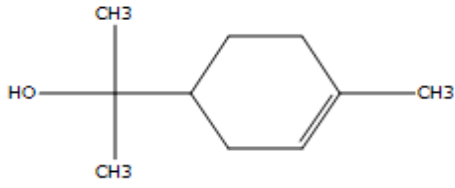
Compound Label	Name	RT	Algorithm
Cpd 27: .alpha.-Terpineol	.alpha.-Terpineol	17.639	Spectrum Extraction



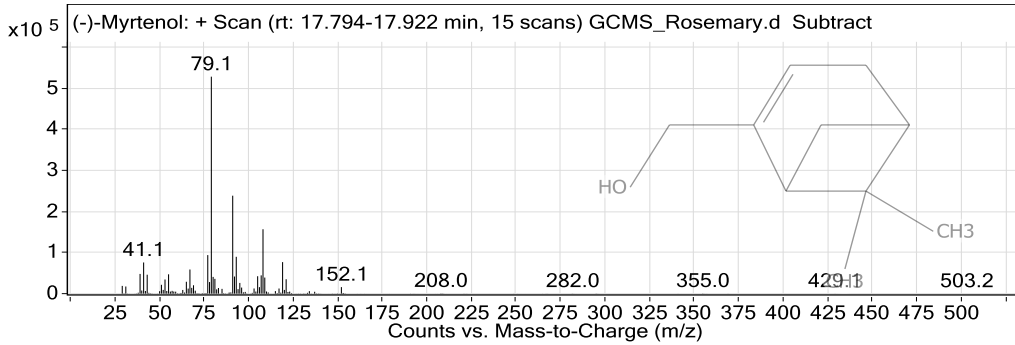
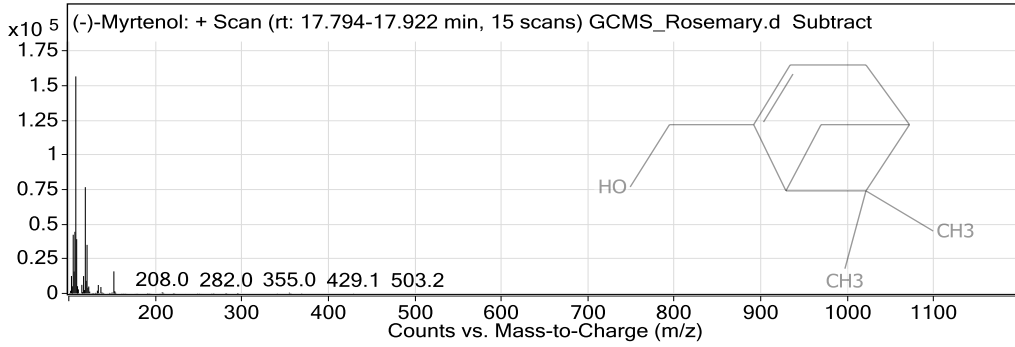
MS Spectrum Peak List

m/z	Calc m/z	Diff(ppm)	z	Abund
43.1				536769.25
59.1				1670527.13
67.1				354640.34
79.1				316758.44
81.1				761745.56
92.1				399661.94
93.1				1275285.13
95.1				297475.72
121.1	121.1	9.77	1	1139841.63
136.1				1010908.19

Qualitative Compound Report



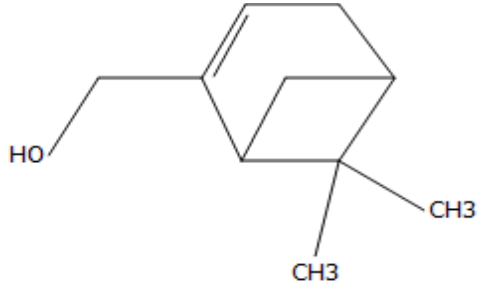
Compound Label	Name	RT	Algorithm
Cpd 28: (-)-Myrtenol	(-)-Myrtenol	17.858	Spectrum Extraction



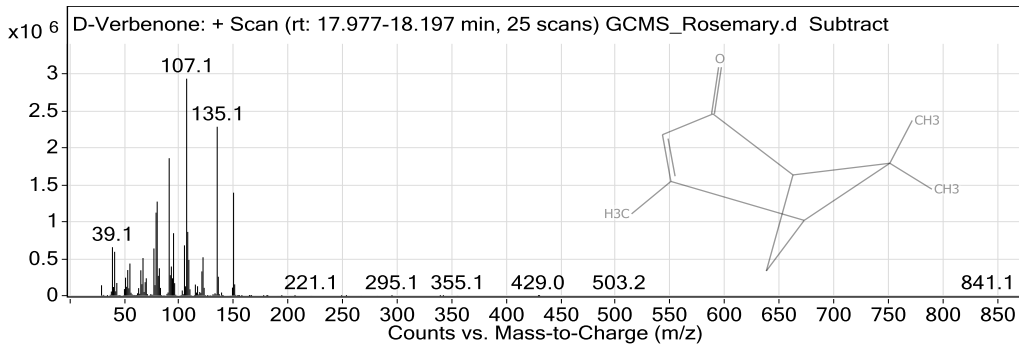
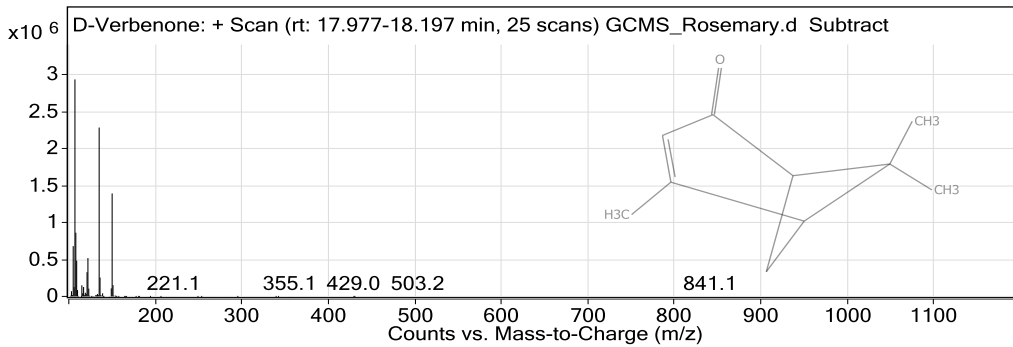
MS Spectrum Peak List

m/z	Abund
39.1	48031.46
41.1	75920.27
55.1	47099.83
67.1	58804.9
77.1	93872.53
79.1	528343.75
91.1	238541.34
93.1	89720.8
108.1	156816.83
119.1	76780

Qualitative Compound Report



Compound Label	Name	RT	Algorithm
Cpd 29: D-Verbenone	D-Verbenone	18.142	Spectrum Extraction

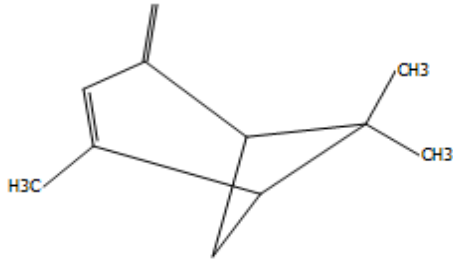


MS Spectrum Peak List

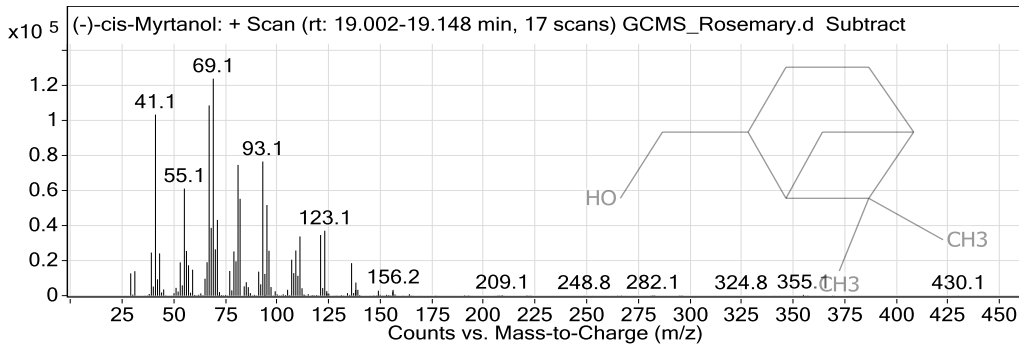
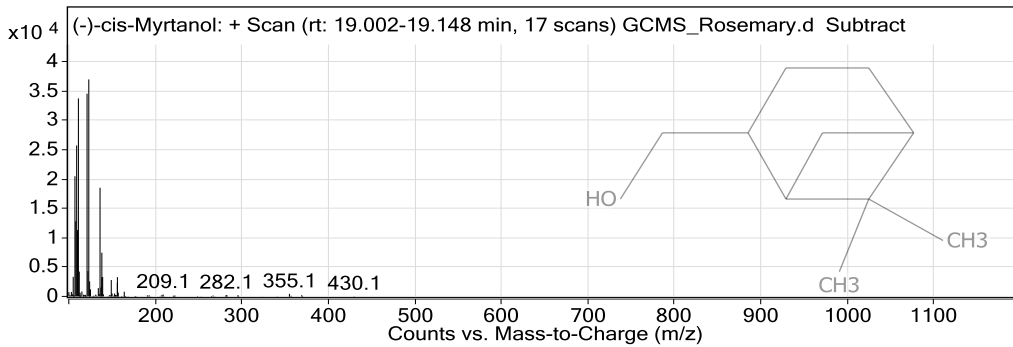
m/z	Abund
39.1	655281.44
79.1	1122905.88
80.1	1272152.13
91.1	1858974.25
95.1	844635.75
105.1	680192.94
107.1	2934610
108.1	861958.75
135.1	2284299.25
150.1	1392720.5

0

Qualitative Compound Report



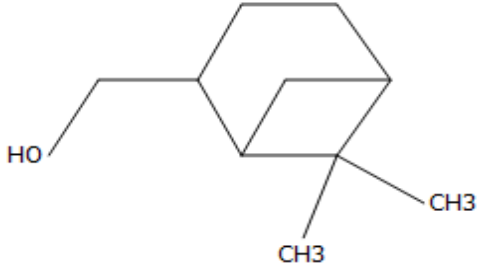
Compound Label	Name	RT	Algorithm
Cpd 30: (-)-cis-Myrtanol	(-)-cis-Myrtanol	19.047	Spectrum Extraction



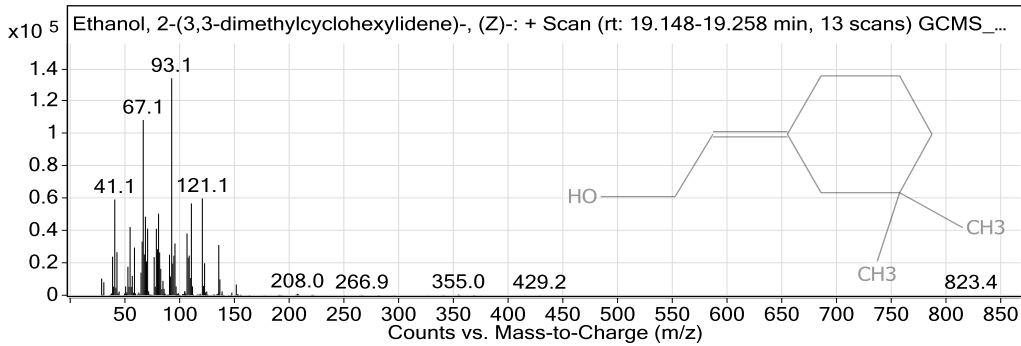
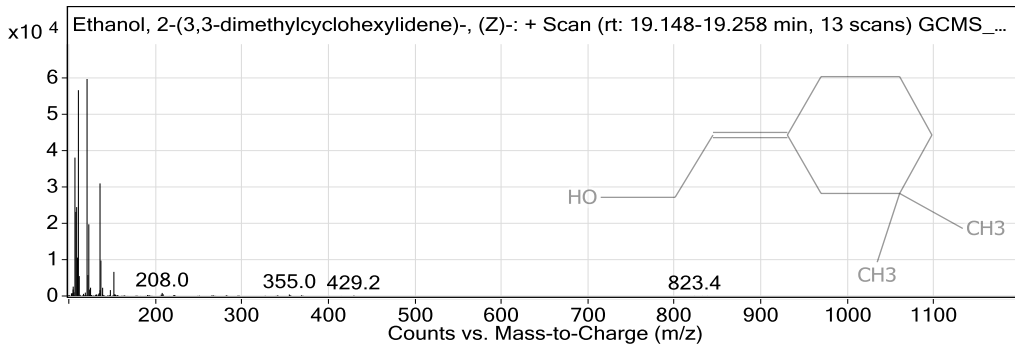
MS Spectrum Peak List

m/z	Abund
41.1	103086.06
55.1	60993.64
67.1	108321
68.1	38601.48
69.1	123558.25
71.1	43144.32
81.1	74453.02
82.1	55126.91
93.1	76375.59
95.1	51600.05

Qualitative Compound Report



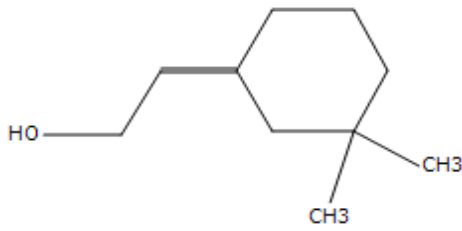
Compound Label	Name	RT	Algorithm
Cpd 31: Ethanol, 2-(3,3-dimethylcyclohexylidene)-, (Z)-	Ethanol, 2-(3,3-dimethylcyclohexylidene)-, (Z)-	19.203	Spectrum Extraction



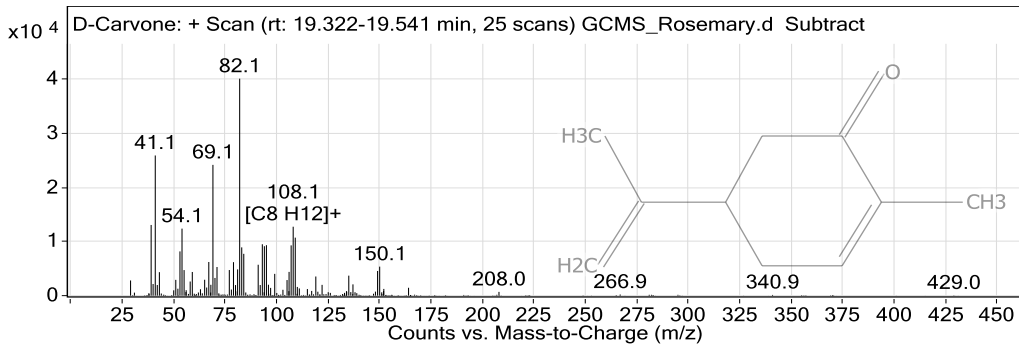
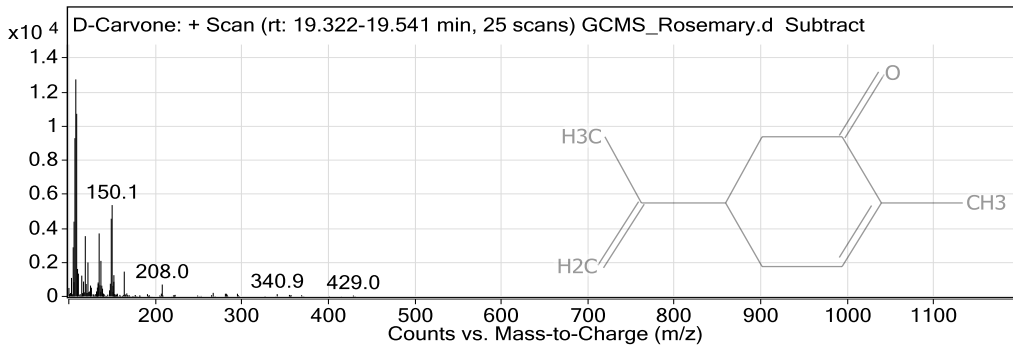
MS Spectrum Peak List

m/z	Abund
41.1	59200.3
55.1	42193.19
67.1	108319.69
69.1	48542.46
71.1	41207.12
79.1	41126.92
81.1	50439.38
93.1	134147.69
111.1	56755.5
121.1	59839.16

Qualitative Compound Report



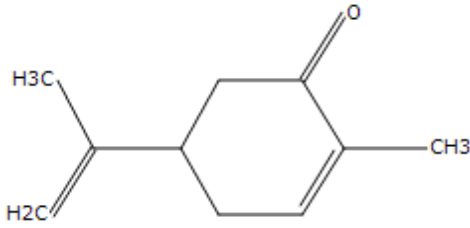
Compound Label	Name	RT	Algorithm
Cpd 32: D-Carvone	D-Carvone	19.349	Spectrum Extraction



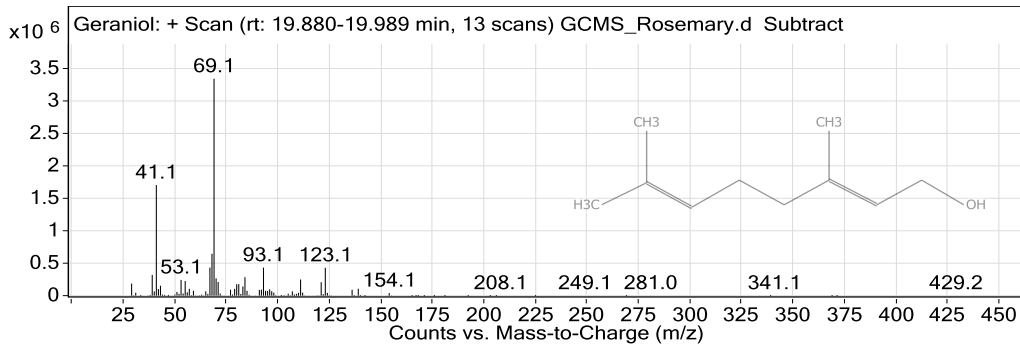
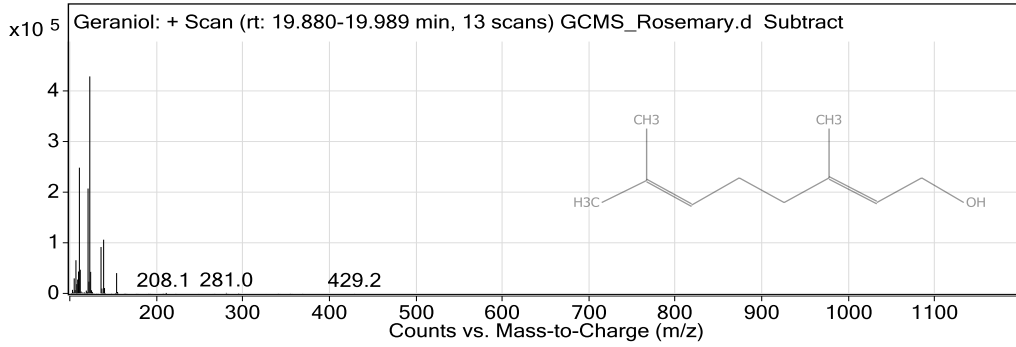
MS Spectrum Peak List

m/z	Calc m/z	Diff(ppm)	z	Abund
39.1				13073.43
41.1				25926.29
54.1				12397.81
69.1				24189.76
82.1				40132.11
93.1				9504.19
95.1				9333.65
107.1				9298.08
108.1	108.1	-10.75	1	12750.23
109.1	109.1	10.79	1	10730.24

Qualitative Compound Report



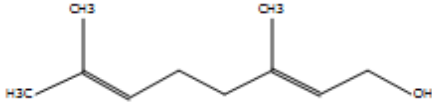
Compound Label	Name	RT	Algorithm
Cpd 33: Geraniol	Geraniol	19.953	Spectrum Extraction



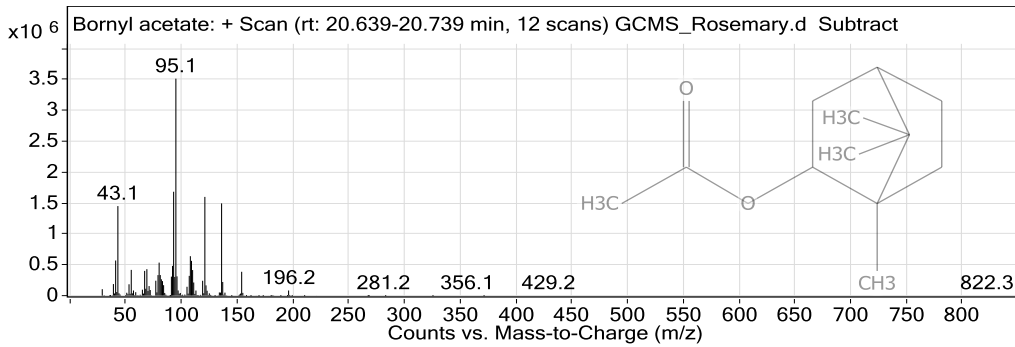
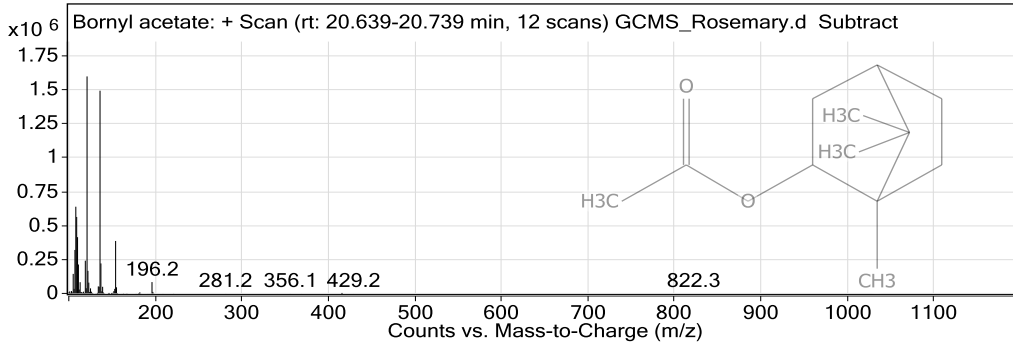
MS Spectrum Peak List

m/z	Abund
39.1	318419.38
41.1	1700060
67.1	431065.44
68.1	643597.06
69.1	3334705.25
70.1	266799.75
84.1	284093.09
93.1	430428.31
111.1	248215.97
123.1	428356.81

Qualitative Compound Report



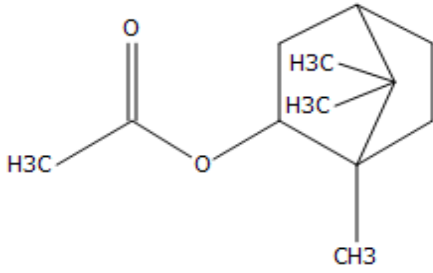
Compound Label	Name	RT	Algorithm
Cpd 34: Borneyl acetate	Borneyl acetate	20.712	Spectrum Extraction



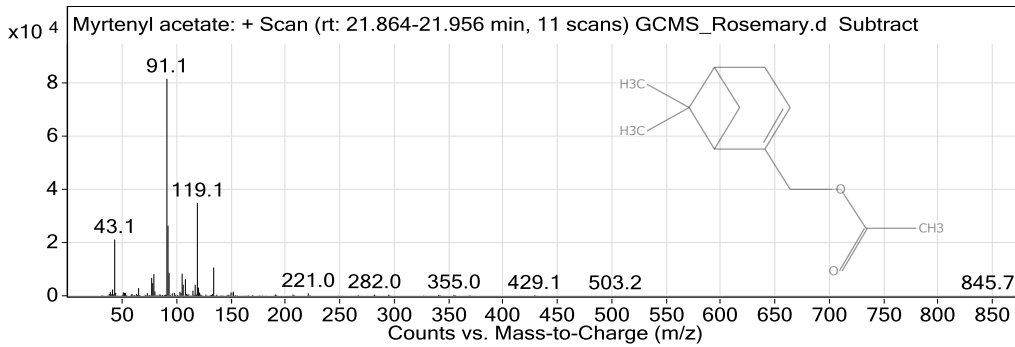
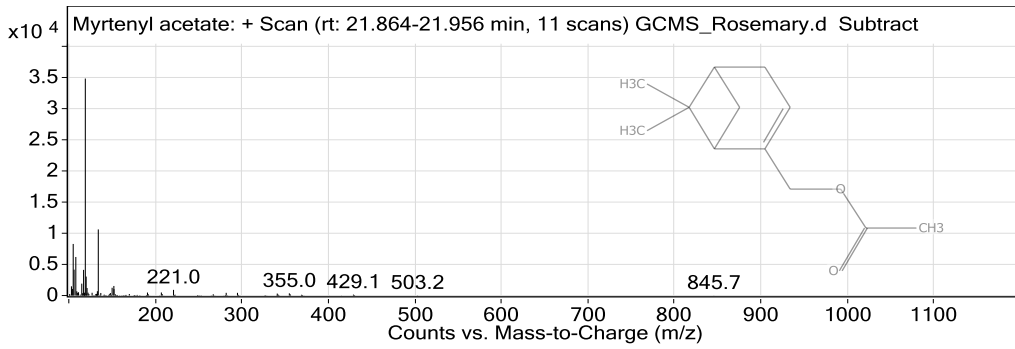
MS Spectrum Peak List

m/z	Calc m/z	Diff(ppm)	z	Abund
41.1				569277
43.1				1450482.75
80.1				535141.44
92.1				482026.09
93.1				1682833.75
95.1				3513930.25
108.1				639063.81
109.1	109.1	10.79	1	563446.81
121.1	121.1	9.89	1	1599279.63
136.1				1493957.25

Qualitative Compound Report



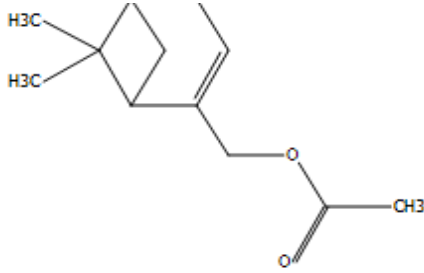
Compound Label	Name	RT	Algorithm
Cpd 35: Myrtenyl acetate	Myrtenyl acetate	21.901	Spectrum Extraction



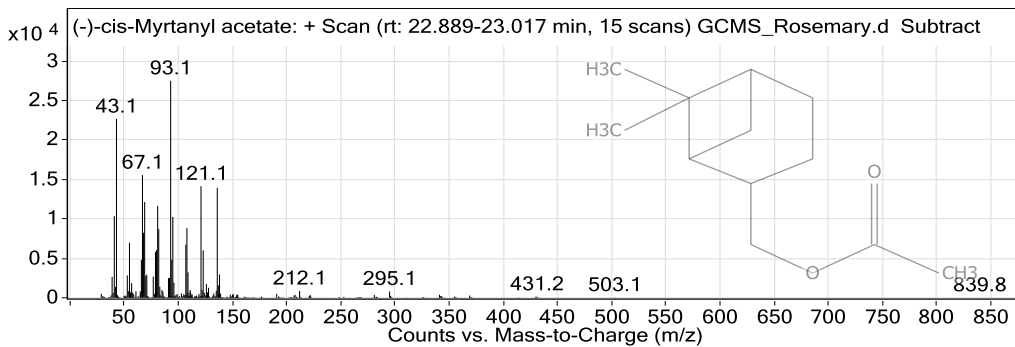
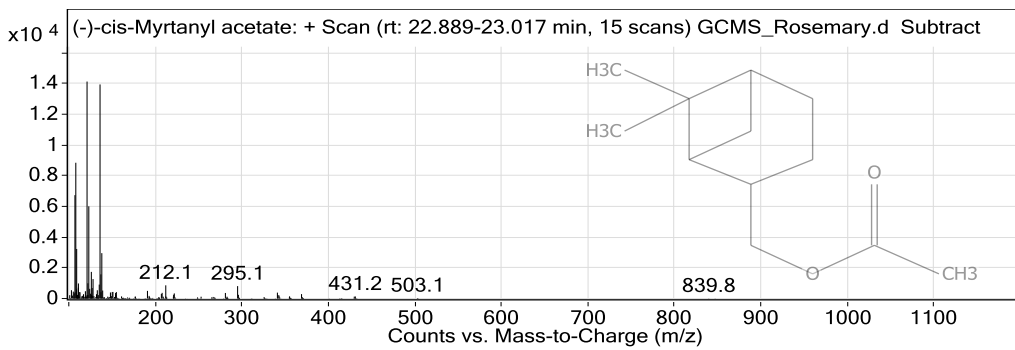
MS Spectrum Peak List

m/z	Abund
43.1	21125.55
77.1	6716.33
79.1	8085.72
91.1	81483.42
92.1	26320.21
93.1	8488.56
105.1	8286.3
108.1	6194.43
119.1	34847.23
134.1	10617.89

Qualitative Compound Report



Compound Label	Name	RT	Algorithm
Cpd 36: (-)-cis-Myrtanyl acetate	(-)-cis-Myrtanyl acetate	22.953	Spectrum Extraction

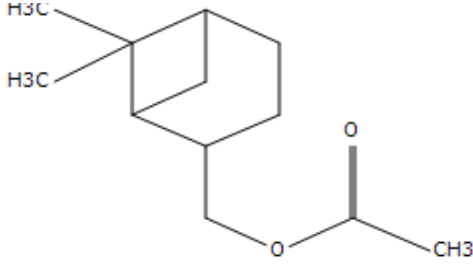


MS Spectrum Peak List

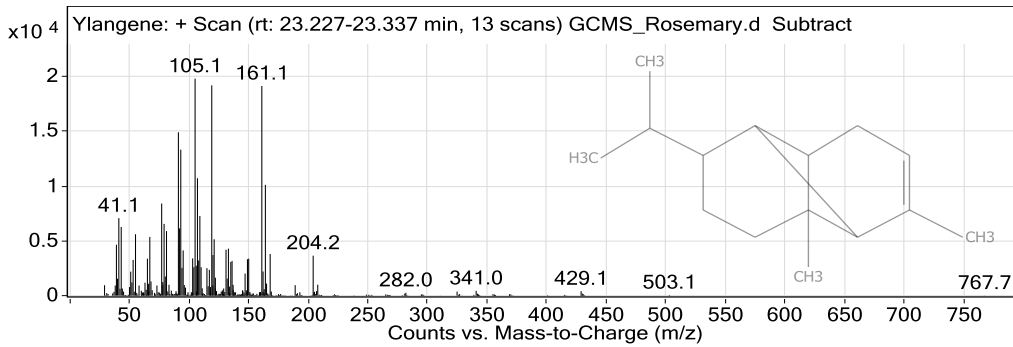
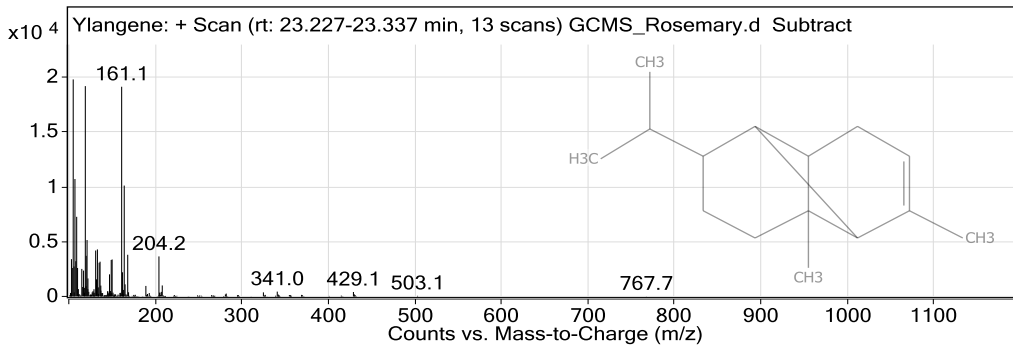
m/z	Calc m/z	Diff(ppm)	z	Abund
41.1				10341.77
43.1				22665.52
67.1				15549.58
69.1				12142.69
81.1				11642.91
93.1				27508.3
95.1				10245.81
108.1	108.1	3.58	1	8849.47
121.1				14138.89
136.1				13950.28

436

Qualitative Compound Report



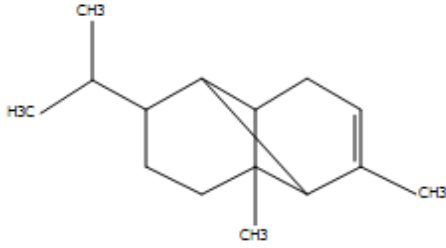
Compound Label	Name	RT	Algorithm
Cpd 37: Ylangene	Ylangene	23.273	Spectrum Extraction



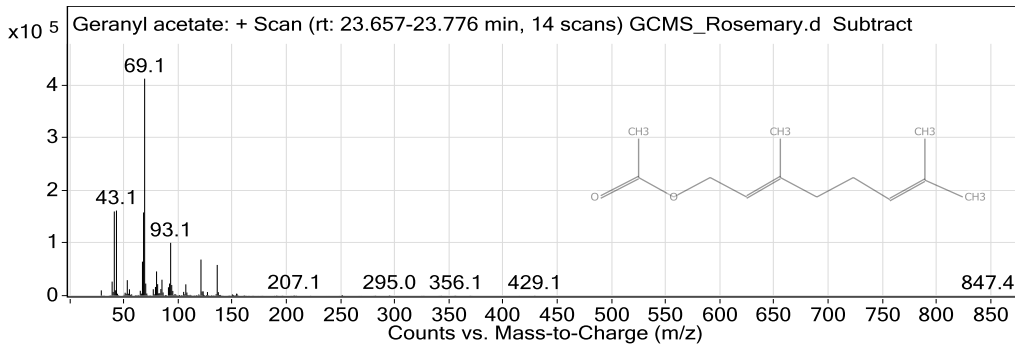
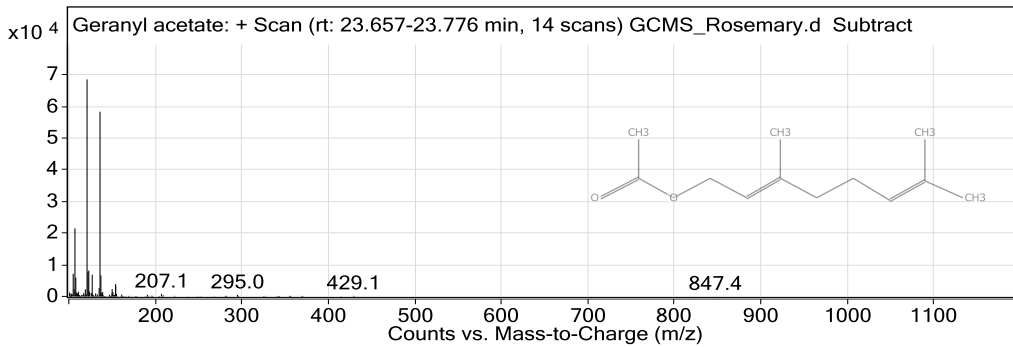
MS Spectrum Peak List

m/z	Abund
41.1	7069.58
77.1	8404.29
91.1	14903.73
93.1	13319.22
105.1	19794.56
107.1	10708.54
109.1	7261.78
119.1	19184.47
161.1	19127.22
164.1	10110.9

Qualitative Compound Report



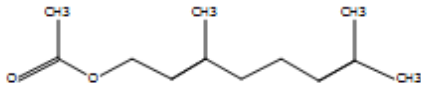
Compound Label	Name	RT	Algorithm
Cpd 38: Geranyl acetate	Geranyl acetate	23.684	Spectrum Extraction



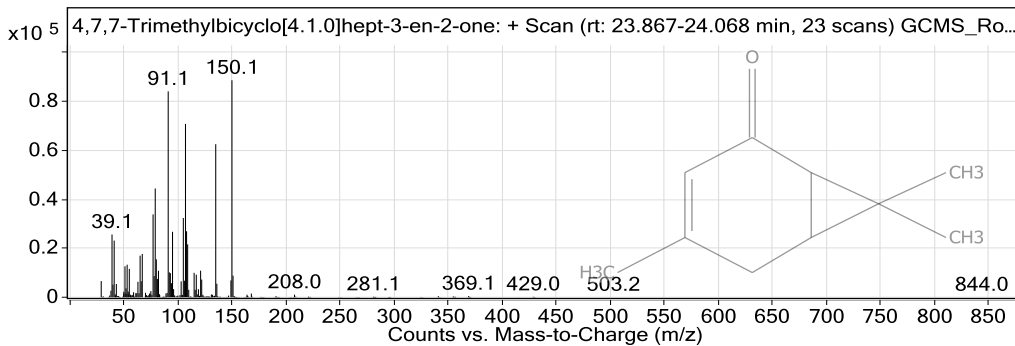
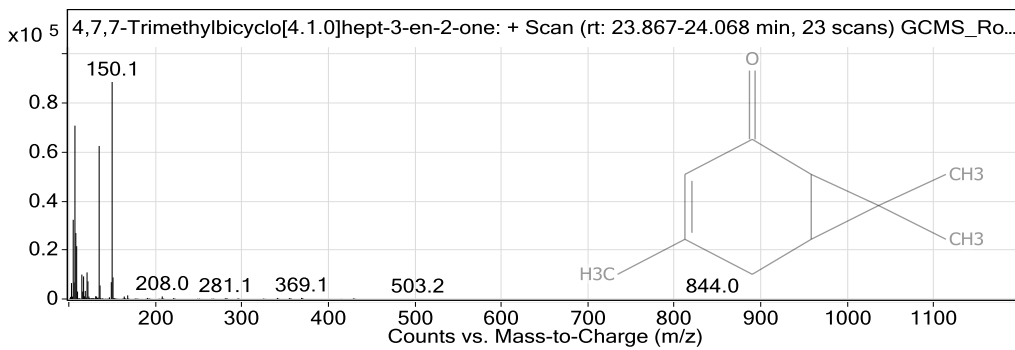
MS Spectrum Peak List

m/z	Abund
41.1	159942.11
43.1	161708.34
67.1	64619.04
68.1	158074.78
69.1	412297.66
80.1	46024.84
85.1	30256.07
93.1	100379.16
121.1	68557.61
136.1	58358.93

Qualitative Compound Report



Compound Label	Name	RT	Algorithm
Cpd 39: 4,7,7-Trimethylbicyclo[4.1.0]hept-3-en-2-one	4,7,7-Trimethylbicyclo[4.1.0]hept-3-en-2-one	23.959	Spectrum Extraction

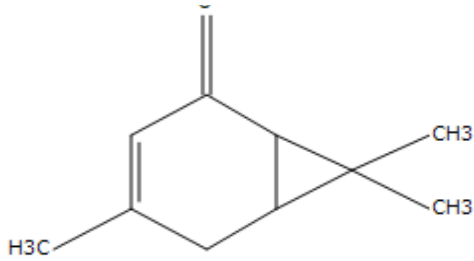


MS Spectrum Peak List

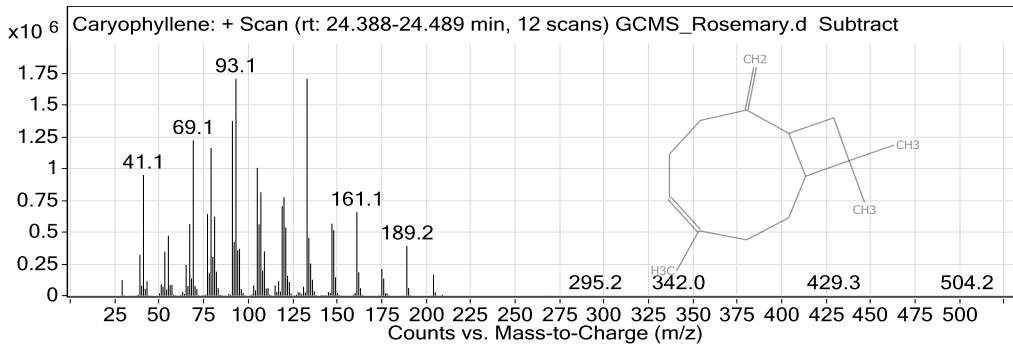
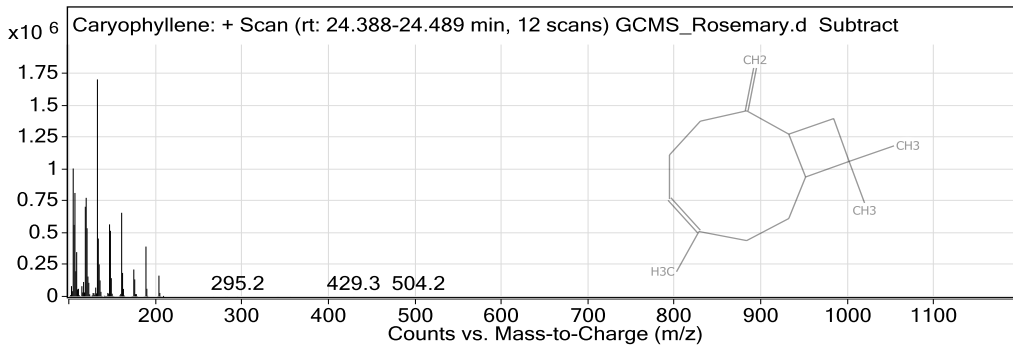
m/z	Abund
39.1	25632.2
77.1	33848.35
79.1	44424.35
91.1	84109.39
95.1	26735.04
105.1	32369.63
107.1	70822.09
108.1	26958.13
135.1	62521.05
150.1	88648.88

0

Qualitative Compound Report



Compound Label	Name	RT	Algorithm
Cpd 40: Caryophyllene	Caryophyllene	24.471	Spectrum Extraction

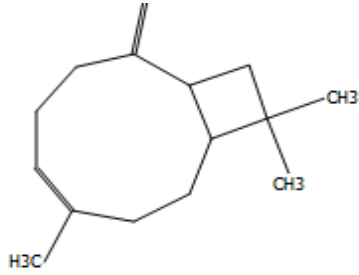


MS Spectrum Peak List

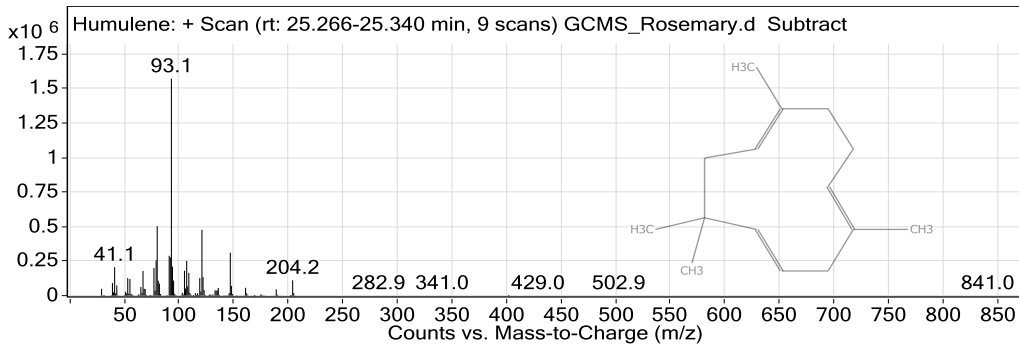
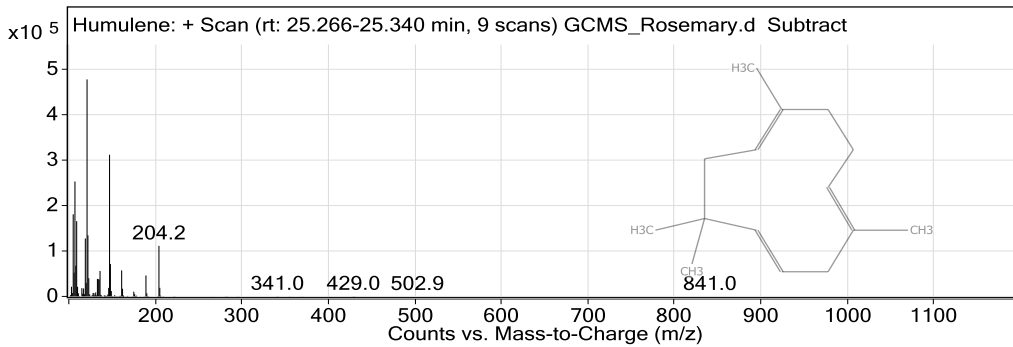
m/z	Calc m/z	Diff(ppm)	z	Abund
41.1				949120.94
69.1				1221512.5
79.1				1161270.5
91.1				1375313
93.1				1706988
105.1				1005152.25
107.1				813044.88
119.1				704713.75
120.1				774822.94
133.1	133.1	9.09	1	1705329

CH2
H

Qualitative Compound Report



Compound Label	Name	RT	Algorithm
Cpd 41: Humulene	Humulene	25.312	Spectrum Extraction

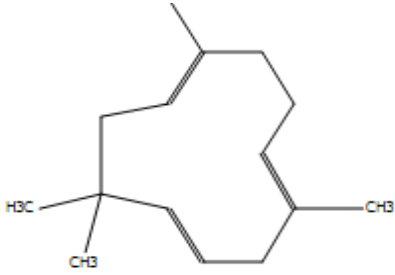


MS Spectrum Peak List

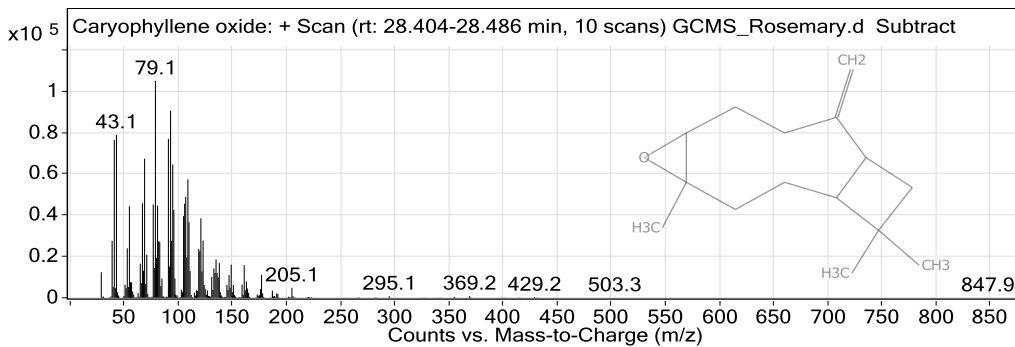
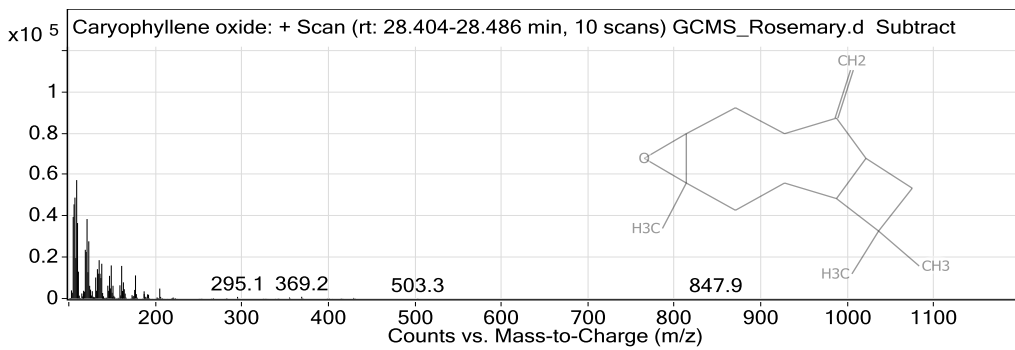
m/z	Calc m/z	Diff(ppm)	z	Abund
41.1				206502.81
79.1				255850.06
80.1				502715.19
91.1				288785.72
92.1				277665
93.1				1571537.5
94.1				210055.81
107.1				252512.42
121.1	121.1	9.35	1	476750.84
147.1				311208.75

H3C

Qualitative Compound Report



Compound Label	Name	RT	Algorithm
Cpd 42: Caryophyllene oxide	Caryophyllene oxide	28.44	Spectrum Extraction

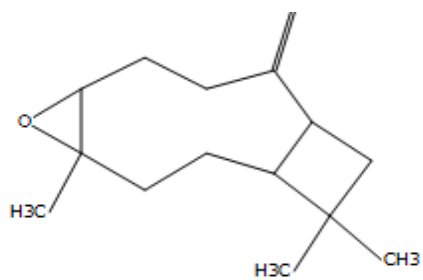


MS Spectrum Peak List

m/z	Calc m/z	Diff(ppm)	z	Abund
41.1				76361.59
43.1				78826.24
67.1				45720.64
69.1				67232.7
79.1				104919.96
91.1				76782.97
93.1				90555.73
95.1				64428.43
107.1				48805.29
109.1	109.1	-0.31	1	57273.43

CH2
#

Qualitative Compound Report



--- End Of Report ---